

THE FRESNO CITY COLLEGE

# RAMPAGE

September 23, 1992

Volume 53, Issue 2



## A Tour of the Tower



Photo by Joe Sanchez

**LIBRARY  
REMODELING**

**MUSIC  
REVIEW**

**FINANCIAL  
AID  
NEWS**

**LOCAL  
GALLERIES**

**NEXT  
ISSUE:  
OCT. 7**

**OAB  
SAGA  
CONTINUES...**

**NEWS  
NOTES!**



## Paying for sports

By Cory Stephn Tyler  
Editor-in-Chief

With the budget problems and now a fee increase, doesn't it seem odd that sports are still flourishing?

Every semester people complain about the price of books, supplies and enrollment fees. These people have a legitimate complaint. It seems that each semester it costs more and more to get an education.

But what if you are involved in sports? To be on a team, you do not have to purchase your uniforms or pay for your travel expenses. Money from Associated Students and enrollment fees help pay for these "necessities".

Isn't it odd, that these types of things are provided for athletics, and yet, nothing is provided for the student who is trying to get an education?

When is the last time you took a

test and were provided a scantron free of charge?

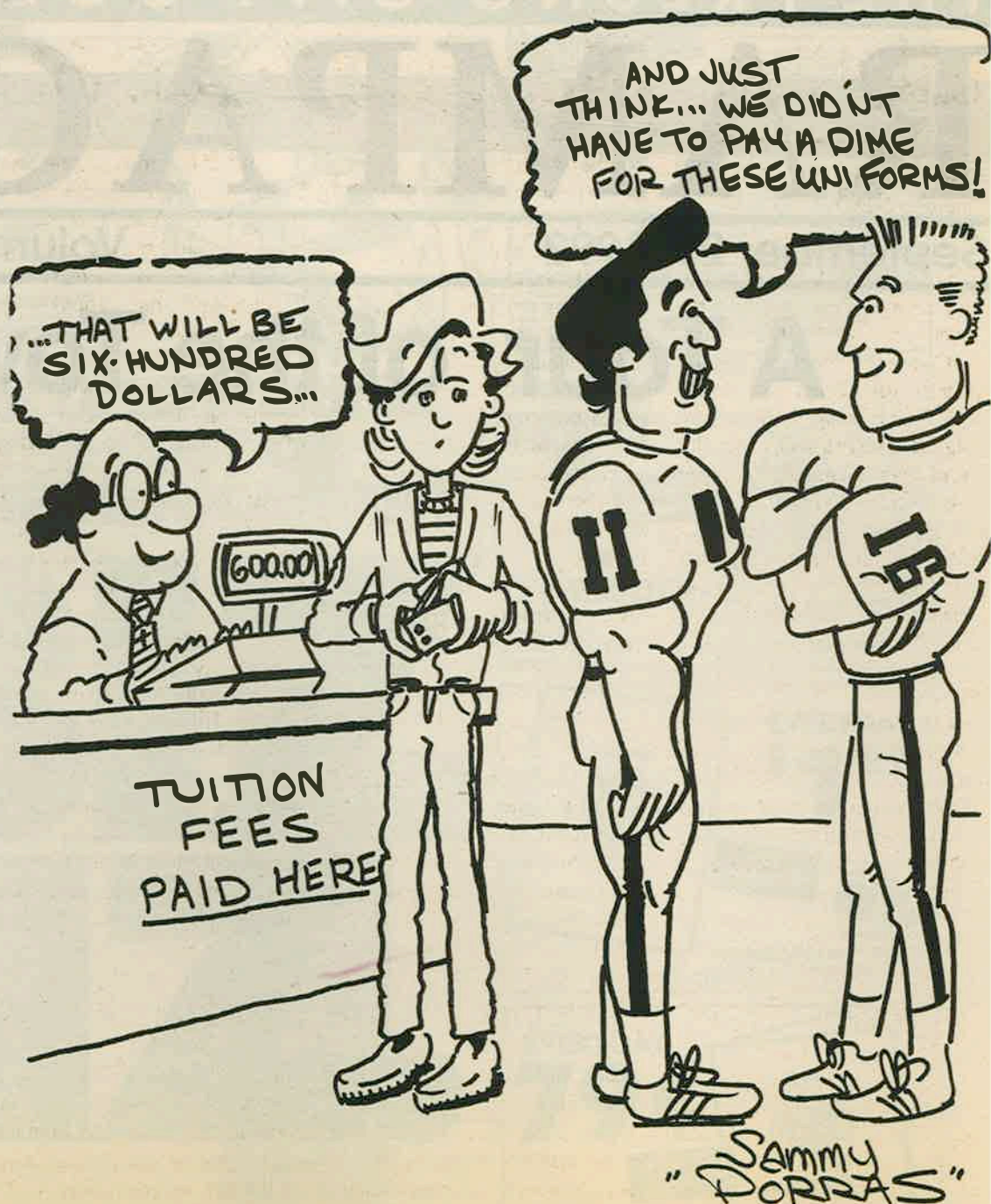
Now while there is nothing wrong with sports, there comes a time where education comes first. Many students are struggling to barely make it through school.

There are a lot of scholarships available to athletes, but not as many as there are for non-athletes.

Many times we hear the argument that football pays for itself, but what about all the other sports that have very poor attendance? Who pays for these?

We need to look at other options. What is so wrong with team members purchasing all their equipment and pay for traveling? Band members have to buy their own stuff and usually raise money for their trips.

Maybe that's what we need, football players going door to door selling candy bars.



Questions or  
Comments?  
Write us:  
Letters to the  
Editor  
c/o Rampage

### THE RAMPAGE

Fresno City College • 1101 East University Avenue • Fresno, CA 93741  
Editorial (209) 442-8262 • Advertising (209) 442-8263

#### EDITOR-IN-CHIEF

Cory Stephn Tyler

#### MANAGING EDITOR

Whitney Brown

#### SPORTS EDITOR

Dara Wright

#### PHOTO EDITOR

Joe Sanchez

#### AD MANAGER

John Roberts

#### STAFF ARTIST

Sammy Porras

#### REPORTERS

Robert Azua

Andrew Burton

John Roberts

Steven Sauer

Richard Snyder

#### PHOTOGRAPHERS

Joe Sanchez

Gary Travoioili

#### ADVISOR

Sam Williams

Comments and editorial opinions expressed in the *Rampage* are those of the writers or independent staff members and do not necessarily represent the position of Fresno City College, its administration, student government, or the State Center Community College District.

## Letters to the Editor

A response to the Letter to the Editor in the previous issue of Rampage:

Art begins his letter with a call to debate the various points of the creation and evolution camps. Perhaps Art should review his position. Creationists have suffered their most severe setbacks when engaging in open debates. In the interest of honesty, I feel I must inform Mr. Greyeanus that he could probably accomplish more by sniping from behind the scenes without having to expose the skeletal remains of the Creationist mythos to the ridicule it so richly deserves.

Next, Mr. Greyeanus states that "the formation of the stars, planets, and galaxies remain a great mystery to many scientists," and backs up this declaration with "quotes" from unlisted sources. I have no idea as to what self-proclaimed "scientists" Mr. Greyeanus has been spending his time with (perhaps rejects from the Institute for Creation Research), but any *real* scientist worth his credentials would be more than happy

to relieve Art's admitted ignorance with the latest in astronomical theory (involving such arcane objects as 'proto-suns,' etc.). Mr. Greyeanus has only to ask.

Third, Mr. Greyeanus rightfully states that the classical Darwinian approach of gradual evolution has gone unsubstantiated, even after extensive perusal of the available fossil record. However, he also fails to mention the subsequent replacement with Stephen J. Gould's theory of "punctuated equilibrium."

As to the theory of evolution leading to a degradation of "scientific integrity"... Who was it that finally caught and corrected these scurrilous attempts to pass off false evidence on the public, Mr. Greyeanus? Well-meaning creationists? Hardly. These falsehoods were rightly caught and exposed by the scientific community, who, unlike the Creationist camp, feel a certain obligation to police themselves, the better to prevent just such situations as these.

Near the end of Mr. Greyeanus' argument, he leaves us with the notion that the theory of evolution "has been used as the basis for racism. Need I remind Mr. Greyeanus that Christianity has been used as a basis for racism and discrimination for far longer than the theory of evolution has been around? The Bible was used to justify slavery, and the Klansmen are some of the most devout Christians in America.

Finally, he ends his letter with the tired, empty appeal of "equivalence" for both "theories." The reason that Creationism is not taught, Mr. Greyeanus, is because it is chock-full of just the sort of fallacious arguments used in your letter. The only class that I would condone the teaching of Creationism in would be "Mythology 101," alongside the myths of other cultures, where one could give it a proper hearing... in its proper context.

Brian Murphy

### Debate over Old Administration Building continues

Richard Snyder  
Rampage Reporter

The fate of the old administration building has been a 20 year discussion that appears to be close to being resolved. 20 years ago the state stopped the building from being destroyed so they could put in a new agriculture building. The idea was abandoned, setting the stage for this long debate. The current plan is

to tear down the building's interior and leave the facade, and building a new allied health center in its place.

This plan has met with both acceptance and resistance from students. In favor of the new building are the students involved in allied health. Their classes are scattered throughout the school. With the new building, not only would the classes be consolidated, but state of the art equipment would be brought in.

Opposing the new building are Associated Students President Greg Simmons, President Pro-Temporary John Connelly and approximately 5,000 signatures on a petition according to Greg Simmons.

The restoration of the building will take 15 million dollars to complete, whereas tearing down and rebuilding will cost 11 million.

see OAB page 3



# Library plans to expand by 1995

Whitney Brown  
Managing Editor

Students attending FCC in the spring of 1995 will be the first to enjoy a larger Learning Resource Center with more accessible materials. Construction for this 7 million dollar project will begin in May of 1993. The existing facilities were designed to serve a student population of eight thousand. Today it serves over 22 thousand.

Associate Dean of The LRC, Bill Seaberg, said that the expansion project will take about two years to complete and most of the funding for it will be provided by the state.

Seaberg is the chairperson of a committee which has constructed a plan of concepts as to how the library will be used. There are state, city, county, building, safety, fire, and handicap codes that have to be taken into consideration when planning and studying the engineering aspects of such a project.

"The state of California will

fund the project," said Seaberg. "We are in a prioritization process, as are all of the community colleges throughout the state, therefore we're entitled to a certain amount of money set aside for these purposes."

The library was built in 1932 and has architectural detailing that is one of its kind. As the renovation and expansion process begins, the aesthetic value of the old library will not change or be covered.

The eastern end of the LRC was expanded and renovated in 1973.

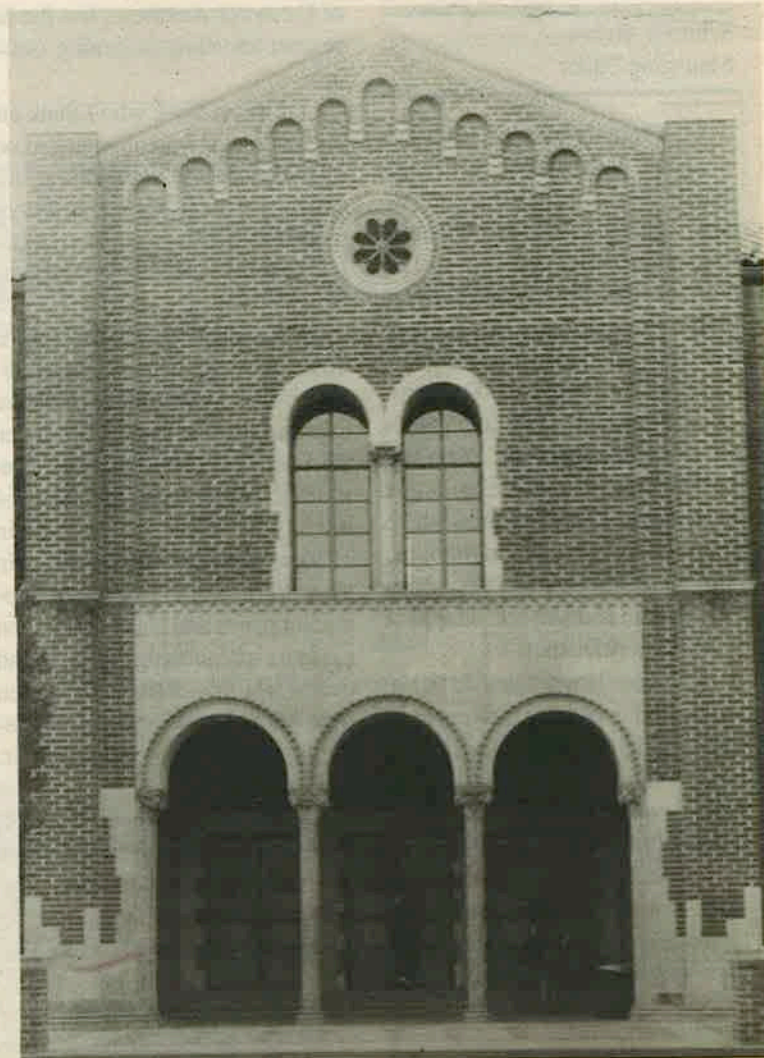
"We're going to double the space of the LRC—that is the library, media center...everything," said Seaberg. "It will expand from 25 to 50 thousand square feet in space. About two-thirds of the expansion will be in the library alone. A fraction of the west end parking lot and the grass area adjacent to Weldon Ave. will be used to house part of the new LRC. The number of parking spaces lost in the process will be 20 at the most," said Seaberg.

"It will be a lower single-level building that will be more readily accessible to students, especially those who are handicapped. The architects have done a marvelous job of tying the old portions of the library in with the new," said Seaberg.

"The construction will not affect the ongoing operation of the LRC," explained Seaberg. "They will build the new facility and, at certain points, block off portion of the library to transfer materials, etc. We don't anticipate a great deal of inconvenience."

Among some of the other improvements that will be made, the Group Study area will expand (with all of the books housed downstairs).

The High-Tech Center for the handicapped will also be enlarged and improved, and there will be an addition to the Computer Lab as well as the maintenance and repair component which repairs the computers and electrical equipment throughout the campus.



Rampage Photo by Joe Sanchez

The FCC Library will be expanding in the next few years

## Psychological Service Center: a place to go for help

John Majors  
Rampage Reporter

Since depression and personal relationship difficulties are the largest psychological problems on campus, Dr. Robert Richardson of the Psychological Service Center would like all students to know that his department provides a large variety of counseling services to meet almost any need for both Fresno City College and Kings River Community College.

The service that is probably the most known and most used is "brief psychological therapy." This allows a student up to eight sessions the first year and four sessions every year after that. This is done on an individual basis and covers a wide range of problems from depression

to personal relationship difficulties to alcohol or substance abuse.

The P.S.C. provides referrals for the majority of those who require additional counseling. These are designed to fit the individual students' budgets, and the P.S.C. have a whole list of sources that will fit their needs.

Other services provided are crisis teams, who respond, along with College Police and Health Services, to situations that require an immediate response anywhere on campus. These problems range from suicide issues to disputes between individuals.

One of the other services is group therapy, which provides people with an opportunity to assist each other and learn by the way other people are handling their prob-

lems. This allows P.S.C. to help a larger number of people at one time. Those involved gain a lot from the knowledge that someone else is going through the same thing.

In addition to other services, the P.S.C. provides individuals with testing, referrals, and consultations. Guest lectures are provided for certain classrooms. Currently they have Dr. Richardson and three interns on staff to provide for the students psychological needs.

For info on their services, contact Psychological Services at 442-8788. They are located in the Student Services building, downstairs in Room 112.

The Psychological Service Center is open Monday through Thursday from 8am to 8pm, and Fridays from 8am to 5pm.

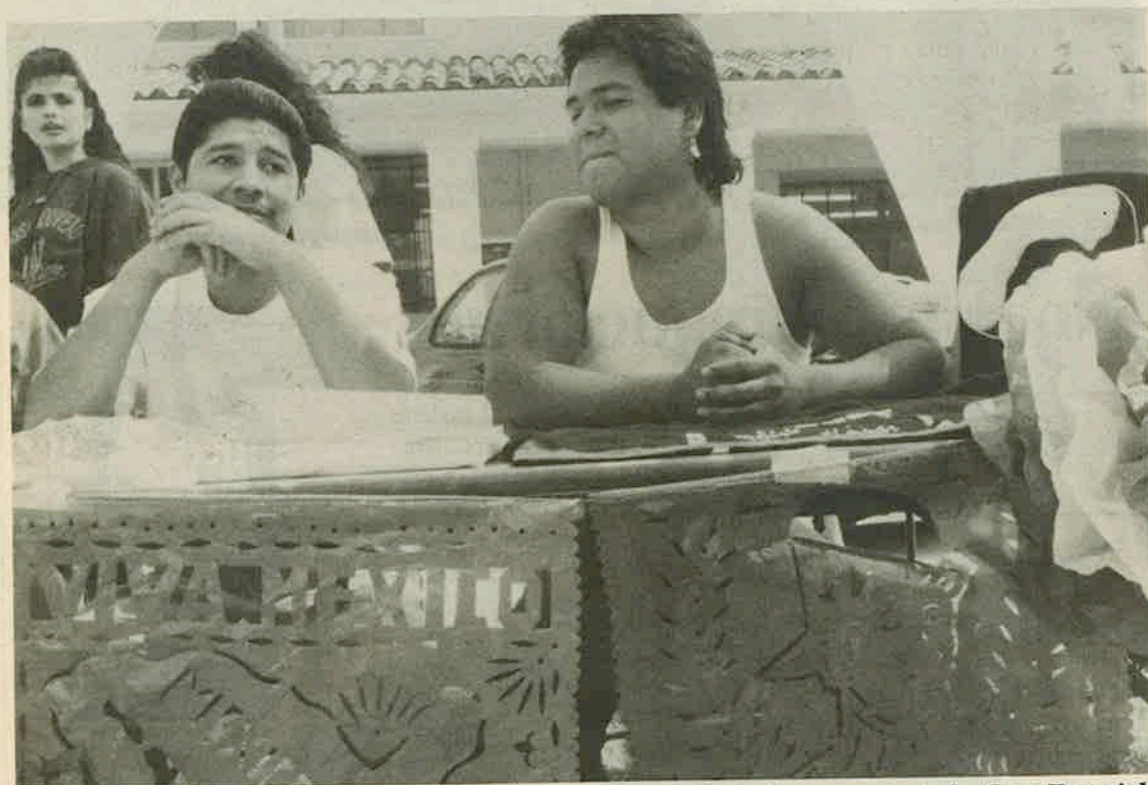
### OAB, from page 2

According to Simmons more class space will be needed later, costing another 7 million, taking the total to 18 million. These are totals taken from official estimates. According to Sarah Reyes, Public Information Officer for the State Center Community College District, the new building will cost only 7 million, and even if more space is needed, that is another 7 million bringing the total to 14 million, which is still less expensive than remodeling the old building.

According to Sarah Reyes

however, the state legislature has nothing against the old building, but they must take into consideration where the money will come from to remodel, as the state will not renovate old buildings. Also, the board is concerned because the building is a fire hazard, and they are liable if an accident occurs. Since the money is there to put up the new building, why not do it? All debates aside, the final word will be in a couple of months when the EIR report comes out, only then will the decision be made.

## Inter-club Council: clubs can do more by working together



Tony Perez, President of Mecha, and Armando Rodriguez enjoying the events on September 16, Mexican Independence Day

Steven Sauer  
Rampage Reporter

John W. Connelly, Associated Students President Pro-Tempore and Chairman of the Inter-club Council (ICC), is looking forward to helping clubs become more successful this semester.

ICC is an organization within the A.S. government which is designed to promote club activities on campus by providing a forum for clubs where they can work together on club activities, and by providing funding to club activities. Each club is to send a representative to the ICC meetings, and that representative reports back to his or her club.

"When you've got 20 people out of 20,000 working on an event, they can't get much done. They just don't have the resources," said Connelly. "But if you can get 200 people working on an event, you have enough people to organize and staff the event properly, and you

have a better chance of having a successful event."

The Inter-club Council has historically been unable to do much due to a lack of participation on the part of the clubs. This semester, however, Connelly expects to get a lot done, as more clubs are getting involved with the student government.

ICC currently meets every Thursday in the Student Senate Chambers next to the bookstore, at 11:00. Connelly encourages all clubs to send a representative, as "the best way to get things done is to keep people informed about what's going on." According to Connelly, student empowerment and organization are the keys to success.

Positions on the Inter-club Council are currently open for interested club members. Any club member with a 2.0 or higher GPA can be on the ICC, and any ICC member is eligible to be on the ICC Executive Committee.



# Tower District nightlife profile

Whitney Brown  
Managing Editor

"Fresno's idea of culture is what the doctor takes from your throat," reads the 1988 Harvard Student Agency's *Let's Go Guide to California and Hawaii*. It has often been said that the only thing natives of San Francisco and Los Angeles have in common is their mutual contempt for Fresno and Fresnoans.

What many of the tour guides fail to include about the "plain and conservative" city of Fresno is that we do have a cultural area where gourmet restaurants, nightclubs, pubs, and antique and specialty shops are found in abundance. This area is The Tower District.

Fresno is not Paris, it never will be. After hearing the lament of many foreign students from Europe, South America, and the Middle East, I often wonder why they linger here if life in Fresno is really as horrid as they describe. I look them over and listen to their whining with sympathy because I can relate to them and their frustrations, but a place is what you make of it. I'm not at all implying "Love It or Leave It" in the case

of Fresno or America... but the incessant sniveling is getting old—fast.

I direct those who I think enjoy neon-clad fraternity and sorority members, solarium-addicts, and Oakleys to the Shaw Scene. If they seem as though they are tired of this, I will to describe Tower District to them.

The district is named for the Tower Theater, located on the corner of Wishon and Olive. Many are unaware that the theater is now on the Local Official Register of Historic Resources for its architectural merit. The Tower Theater, built in 1936, was one of the first theaters in the world to employ the use of fluorescent paints and black lighting on the murals decorating the walls and ceiling. The theater has recently been restored and seats 900. It has recently featured Harry Connick Jr. and Joan Rivers.

The Daily Planet, 1211 N. Wishon, is one of Fresno's most fashionable places to be seen. The Planet is one of the few places in town you can go to and feel like you're not in Fresno, but Vienna. The food is excellent and the prices steep. The waiters saunter to your

table, wine glass in hand telling you the specials as if they were the freshest pieces of gossip, as they takes small sips from a ruby Cabernet. The Stockholm 75 cocktails are wonderful.

Butterfield Brewing Company, 777 E. Olive, is much more than a brewery, it is a well lit, comfortable restaurant with well-priced, delicious food. The bar is modern and they feature live music (jazz and blues, folk, and other) at least three nights a week. ID's are checked nightly and those under 21 are not allowed in after 10 p.m.

The Wild Blue Yonder 1145 N. Fulton, has catered to music lovers since the early seventies. The Blue offers a huge variety of live music throughout the week and the cover charge is rarely over \$10. It is a great place to go dancing. It's dark and has recently been enlarged. If FCC had a hang out, The Blue would probably be it. Bands range from Ska to Blues, Reggae to Funk, Rock to Jazz.

Across the street is a new little restaurant, called Veni Vidi Vici, 1116 N. Fulton. The minute you walk in—if a native of Fresno—you will breath a sigh of relief. Finally,

you'll think. One wall is red brick and the lighting is minimal. Black clad waiters come up to your table, tease you and make you feel welcome. This restaurant is very urban, very Melrose and the food is as beautiful to the eyes as it is delicious. Very friendly service and an unbelievable atmosphere—"baroque-deconstructive," as one employee put it.

Club Fred, 1426 N. Van Ness Ave., used to be the Olympic Tavern and although the decor, owner and bar have changed, the same low cover, wild people and great live music remain. This is definitely the absolute opposite of Wilker's, refreshingly so. It's dark and there are people dancing in every corner. This place is one of the few Fresno hang outs where people *really* let it all hang out.

Back on Olive, between Butterfield's and the Tower Theater is a roastery named Java. While interviewing a student from FCC who had recently returned from the London semester abroad, we talked about all that Fresno lacks. He sighed then and said, "Java makes life bearable in this town. I love Java." He was talking about the cafe that has

fast become everyone's favorite coffee haven since the Upstart Crow. The walls are filled with local artists' work, and a patio has recently been added. The beans are roasted on the spot and the aroma alone is stimulant. I've heard many grateful caffeine fiends say that living in Fresno is a lot easier because of Java.

Livingstone's has been around as long as the Daily Planet and is one of the classier restaurants in town. Located at 831 E. Fern Ave., it has sophisticated, serious, (verging on uptight) English-library-look to it. The service is stern but very efficient and the food is good. This is a place to go and have intimate conversations quietly and enjoy the peace. As for the specialty, antique and clothing stores, there are too many to mention. I recommend stopping in them if you are in the area. The Brass Unicorn and Valentin's are two of my favorites.

SOMEONE NEEDS YOU - BIG BROTHERS, BIG SISTERS OF FRESNO 268-2447

## Fresno's art galleries have something to offer everyone

Steven Sauer  
Rampage Reporter

**Allard's Gallery**, in the Piccadilly Square Center at 2225 W. Shaw Ave., is showing paintings and sculptures. Hours are from 10 a.m. to 5 p.m. on weekdays, and 10 a.m. to 4 p.m. on Saturdays.

**Art and the Artist**, at 5789 N. Palm Ave., is showing assorted art works. Hours are from 9 a.m. to 5 p.m. on weekdays, and 10 a.m. to 4 p.m. on Saturdays.

**Art Space Gallery**, on campus at FCC, is showing assorted art works. Hours are from noon to 5 p.m. Tuesday through Friday, and 1 p.m. to 5 p.m. Sunday.

**Fig Tree Gallery**, at 1536 Fulton St., is showing abstract paintings. Hours are from noon to 3 p.m. Wednesday through Friday, 1 p.m. to 4 p.m. Saturday, and 1 p.m. to 6 p.m. on Sunday.

**Fresno Art Museum**, at 2233 N. First St., is showing Mexican artwork. Hours are from 10 a.m. to 5 p.m. Tuesday through Friday, and noon to 5 p.m. on weekends. Admission fee is \$2 for general admission, \$1 for students and seniors, and free for members and those 16 and under. Admission is free for all visitors on Tuesdays.

**Gallery M**, in the NorthPointe shopping center at 6735 N. Palm ave., is showing assorted art works. Hours are from 10 a.m. to 6 p.m. Monday through Saturday, and by appointment (call 431-1146).

**Gallery 25**, at 1526 Fulton St., is showing an exhibit about the discovery of the Americas. Hours are from noon to 3 p.m. Thursday and Friday, and 1 p.m. to 4 p.m. on weekends.

**Gallery II**, at 1490 W. Shaw ave., Suite G, is showing watercolor landscapes. Hours are from 10 a.m. to 5 p.m. on weekdays, and noon to 4 p.m. Saturday, or call for an appointment (222-4443).

**Java Cafe**, at 805 E. Olive Ave., is showing acrylic paintings. Hours are from 7 a.m. daily.

**Metropolitan Museum**, at 1555 Van Ness Ave., is showing assorted artwork. Hours are from 11 a.m. to 7 p.m. on Wednesday, and 11 a.m.

to 5 p.m. Thursday through Sunday. Group tours are available by appointment (call 441-1444). Admission fee is \$3 for general admission, \$2 for senior citizens, \$1.50 for students and children 4-12, and free for

members and children 3 years old and younger.

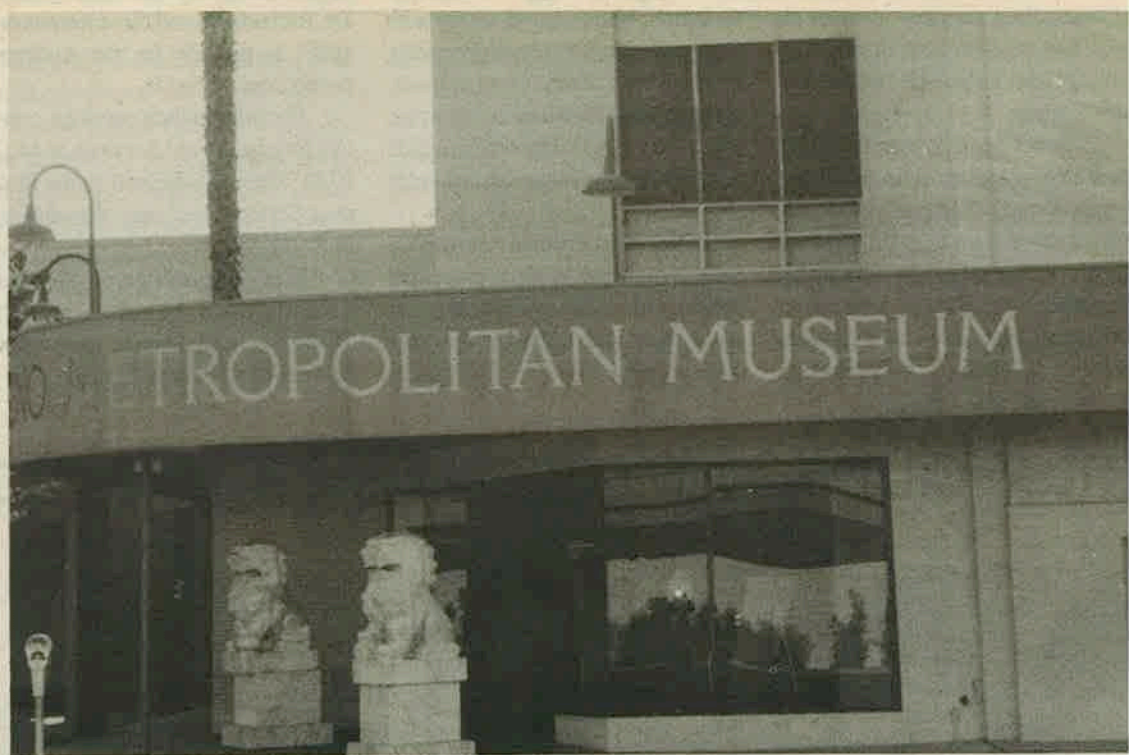
**Muse Gallery**, at 845 E. Fern St., is showing assorted art works. Hours are from 11 a.m. to 6 p.m. Monday through Saturday.

**Plum's Contemporary Arts**, in F Garden Village at 5096 N. Palm Ave., is showing landscape artwork. Hours are from 10 a.m. to 6 p.m.

*continued on page 6*



Rampage photo by Gary Travoili  
Judy Bennet, financial aid clerk processing Coleen Keaton's financial aid application



Metropolitan Museum

Rampage Photo by Gary Travoili

## No cuts to financial aid

by Andrew Burton  
Rampage Reporter

Student fees at Fresno City College are going to increase the effects will be wide spread among all aspects of the campus routine. Everyone shall be affected. The school employees, the students, the surrounding community will all have to pay the price.

For one group of students there will be no change in the normal

routine. The financial aid students will face no decrease in accessibility for funds. There will not be a change at the financial aid office. The Financial Aid Coordinator, Frank Ramon says the only probable difference is that there will be an increase in students applying for financial aid. The students that are eligible for assistance and apply will suffer no impact from the new fee increases. All the grants such as the Board of Governors Grant which waives all fees and the health fee waiver will remain as is.



Sure air bags work great in front-end collisions, but only a safety belt can protect you from side and rear-end collisions. So buckle up. And you'll cover all the angles. YOU COULD LEARN A LOT FROM A DUMMY. BUCKLE YOUR SAFETY BELT. For more information, call the State Office of Highway Traffic Safety at 1-800-424-4889.



## A letter from A.S. LVP Jonathan Archie

I am overwhelmed with joy. A few weeks ago many of you came up to visit me and other student representatives in our offices above

the bookstore. It was your desire to voice your dissenting opinion against fee increases for all state community colleges. Because of your voice

being heard in the state capitol, many of the state legislators changed their position and were forced to vote no against fee increases because of the

impact that you made for education. The Associated Students organization salutes you for your successful endeavor. We are grateful

for your commitment.

Jonathan K. Archie  
Associated Students L.V.P.

# WORK SMARTER. NOT HARDER.

**W**e're working smarter, too. So you don't have to work harder.

For us, it means an ongoing relationship with educators and professors, striving to understand what's

Like the TI-68, an advanced scientific that solves up to five simultaneous equations, performs complex numbers and offers formula programming.

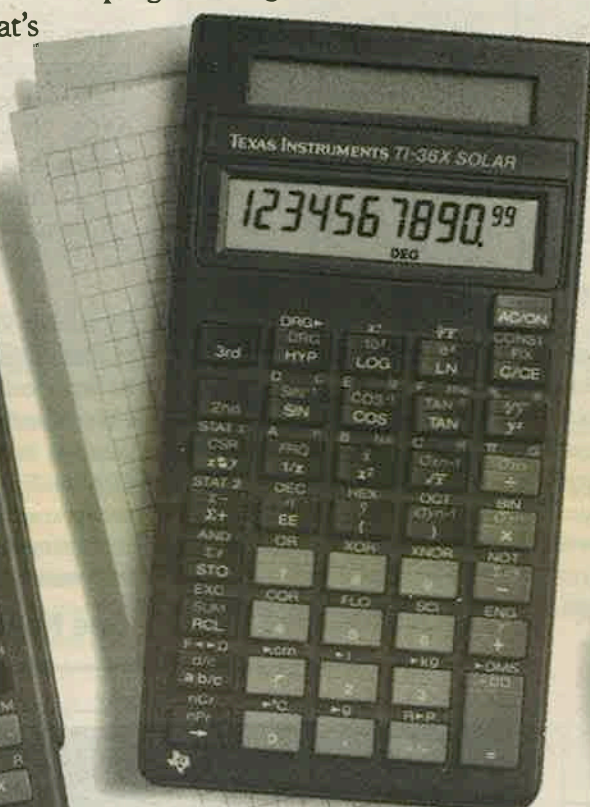
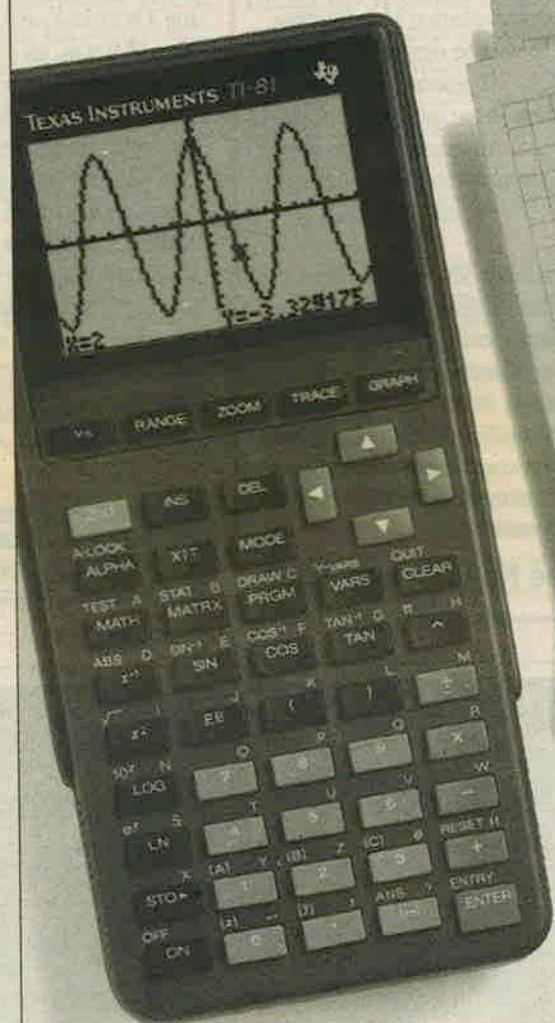
Plus a whole lot more.

No matter what your major, no matter what the course, there's a TI scientific or business calculator that's right for you. Do the smart thing: make one of them a part of your professional personality now, and for the years to come.

You'll be on your way to working smarter. Instead of harder.

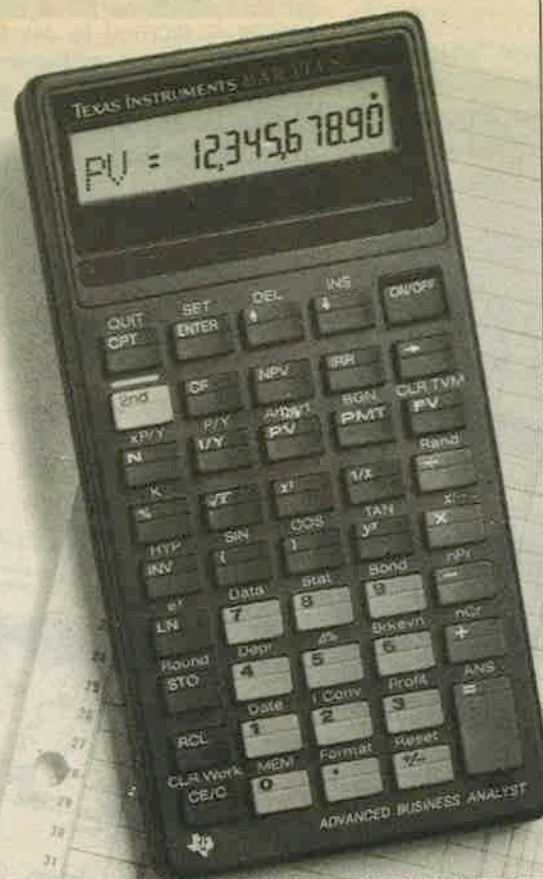
Try the entire line of TI scientific and business calculators at your local TI retailer.

**TEXAS  
INSTRUMENTS**



The TI-36X SOLAR, a general purpose workhorse powered by ANYLITE™ solar cells so you never need batteries.

The BA II PLUS™ For business students, this is the one to get. It handles time-value-of-money and offers cash flow analysis for internal rate of return (IRR) and net present value (NPV).



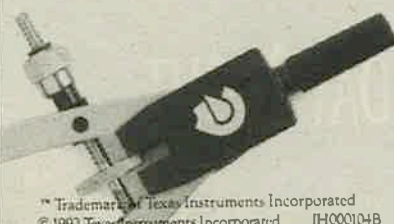
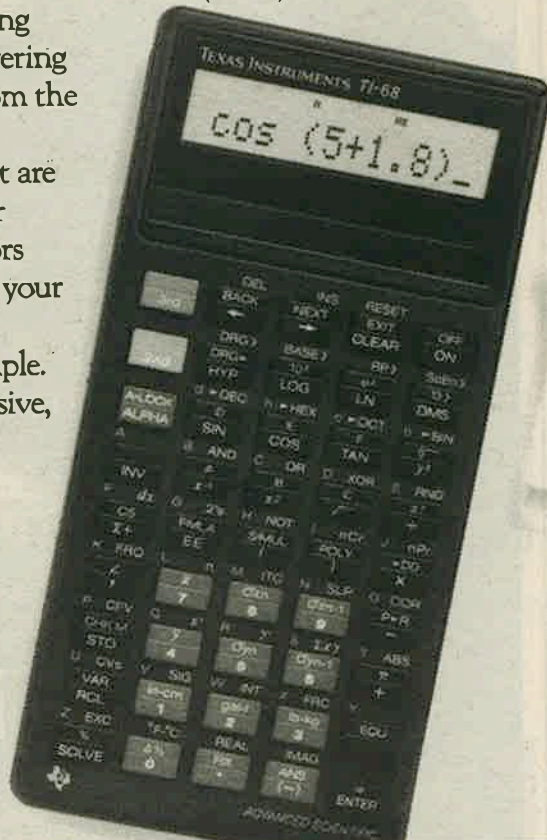
needed to help them make math concepts come alive.

It means continually working with students like you, discovering firsthand what you expect from the calculator you select.

The result? Calculators that are highly recommended by your teachers and peers. Calculators that are perfectly matched to your major and your coursework.

The TI-81 is a perfect example. It offers the most comprehensive, easy-to-use graphing features available with extensive programming capabilities.

And there are others.



™ Trademark of Texas Instruments Incorporated  
© 1992 Texas Instruments Incorporated TI000104B

**\$500 MAIL-IN REBATE \$500**  
when you buy the TI-60X, TI-68 or BA II PLUS™

HERE'S

- HOW:
1. Save your original cash register receipt.
  2. Clip the proof-of-purchase UPC bar code from package.
  3. Complete this mail-in rebate certificate.
  4. Send all three items to the address below.

MAIL

TO: **BACKTO-SCHOOL REBATE OFFER**  
Texas Instruments Incorporated  
P.O. Box 53 • Lubbock, Texas 79408

NAME (PLEASE PRINT) \_\_\_\_\_

ADDRESS \_\_\_\_\_

CITY \_\_\_\_\_

STATE \_\_\_\_\_

ZIP \_\_\_\_\_

TERMS AND CONDITIONS: This offer valid for purchases between 8/1/92 and 10/31/92. All claims must be received by 11/30/92. Allow 8-10 weeks for processing. Send this completed form along with the original cash register receipt and the proof of purchase bar code to the address above. This original mail-in certificate must accompany your request and may not be duplicated or reproduced. Not redeemable in your store. Offer valid only as stated on this form and only in the U.S.A. Offer void where prohibited, taxed, licensed, or restricted. Limit one rebate per household or address. Texas Instruments reserves the right to discontinue this program at any time and without notice.



## Temple of the Dog, Not a Dog

by Sammy Porras  
Staff Artist

TEMPLE OF THE DOG, the self-titled 1991 A&M release, is an hour-long, laid back, innovative rocker with the seemingly late night audience in mind during its conception. However, this release is no sleeper.

Chris Cornell, sole lyricist and composer of most of the music, takes the listener on a insightful journey with moody songs addressing the hardships of life, love, and religion as well as other surprises. As stated, many of the tracks are late night kick-back tunes, such as the opening bluesy "Say Hello To Heaven," the down and out "Call Me A Dog,"

and the closing "All Night Thing," all being more than commendable compositions.

However, others offer some refreshing twists, such as "Reach Down," the CD's second track, which runs for 11 minutes, 13 seconds. The song opens with a vintage Black Sabbath influenced riff, but with a more light-hearted touch. Although the piece lags somewhat during the opening verses, the listener's anticipation manages to pay off with a cool, smooth chorus, a burnin' four minute plus guitar solo, and a most powerful exit.

On a more popular subject is "Hunger Strike," the CD's first cut to receive radio airplay (and a video to boot), which deals with injustice

between the privileged and the affluent. A really cool song with the flavor of 60's pop combined with a mean metal hook.

"Pushing Forward Back," number four on the track list, stands out from all the others with its trick rhythm accents, youth gone wild attitude, and all around hard driven force. A personal lyric about a mother's anguish as she helplessly watches her good boys go bad.

Religion is another target for Mr. Cornell's muse, such as the uncanny "Wooden Jesus," a playful tune addressing the monetary aspects of religion as the following lyric excerpt so cleverly states:

"Coat hanger halos don't come cheap

From television shepherds with  
Living room sheep  
And I pray, can I be saved  
I spent all my money on a future  
grave

Wooden Jesus I'll cut you in  
On twenty percent of my future  
sin"

"Four Walled World" is one-hundred percent listening pleasure; bluesy...slick...memorable - definitely worth the bucks. However, in close competition is the honorable mention "Times Of Trouble," a chilling lyrical descent into the realm of a heroine addict, but with a climb and refrain offering the light of hope. Backed by a classic musical composition, this song really kicks posterior.

Although this release may appeal greatly to the likes of thrashers or headbangers, it is sure to find a sizable cult following among rock n' rollers. TEMPLE OF THE DOG is an addition to the foundations of influential rock for those who appreciate a more simplified rock that doesn't quite have the flare of typical party-hardy womanizing L.A. based chartbusters, but it is still a skillful blend of rockin' rhythmic kickin' licks, and good ol' fashioned heart and soul, topped off with a real attitude. If you like laid back rock, kick it with TEMPLE OF THE DOG.

Rating: 8★s

## Anthony Perkins dies from AIDS

by Richard Snyder  
Rampage Reporter

Anthony Perkins, who helped redefine the horror genre with his portrayal of Norman Bates in the Psycho film series died September 12 at 4:06 p.m. of AIDS complications. He was 60. His film career spanned nearly 40 years, from his debut in "The Actress" in 1953 to "The Deep Woods," which will air later this season on NBC. Among his memorable film roles were "Fear Strikes Out," "On The Beach," "The Tin Star," "Crimes of Passion," and "Friendly Persuasion," which earned him an academy award nomination for best supporting actor in 1956. Perkins always turned in a good

performance no matter how bad the film was.

Perkins made this statement about his condition "I chose not to go public about this because to misquote *Casablanca* I'm not much at being noble but it doesn't take much to see that the problems of one old actor don't amount to a hill of beans in this crazy world.

"There are many who believe that this disease is God's vengeance, but I believe it was sent to teach people how to love and understand and have compassion for each other. Perkins is survived by his wife, Berinthia Berenson, and his two son Osgood Perkins, 18, and Elvis Perkins, 16. His death is a definite loss to the film world.

## News Notes

September 26, - Clean Air Affair 1992. Times are 9 a.m. and 3 p.m. at the California State Automobile Association District Office at 1595 Shaw Ave. in Clovis. All attending receive a free exterior safety check of their vehicle and an unofficial smog check to check their emissions. Information will be provided on how to reduce smog and improve air quality.

Saturday, September 26 - Health Fair for Women, being hosted by the Fitness for Women, and is being sponsored by local physicians. There will be free Eye, hearing, blood pressure, body composition tests, as well as pro-

viding information on various important women's health issues. There will be demonstration on PACE 30 minute workout, a fashion show, and other activities are scheduled. For more information regarding the Health Fair, please call 227-1135

September 30 - Fresno City Accounting Association kicks off its first meeting at 5 p.m. in BE 134. Meetings feature guest speakers from the local area, CPA meetings, and many other networking functions to help accounting students become professionals.

See News Notes, pg.7

## Galleries

from page 4

Monday through Saturday excluding Thursdays, and is open from 10 a.m. to 9 p.m. on Thursdays. Spectrum Gallery, at 1306 Wishon Ave., is showing assorted artwork. Hours are from noon to 5 p.m. Monday through Thursday, and 5 p.m. to 8 p.m. on Fridays. Valley Art Gallery, in the upper level of Manchester Center Blackstone and Shields Ave. showing assorted artwork. Hours are from 10 a.m. to 9 p.m. on weekdays, 10 a.m. to 6 p.m. Saturdays, and noon to 5 p.m. on Sunday.

DISPLAY ADS ONLY \$4.00  
PER COLUMN INCH!!!

## TEACH HOPE NEW MUSIC FOR THE INNER CITY



## AN EVENING OF MUSIC & MASKS

FROM OPERA, STAGE AND FILM  
FRI., OCT. 23 ■ 8 P.M. ■ \$15.00

Vocal artists join teachers and students to perform music from the world's favorite literary. — CANNIBAL, LE MIZ, SUNDAY IN THE PARK WITH GEORGE, GILBERT AND SULLIVAN, THE WIZARD OF OZ, CITY OF ANGELS



## SABELLA CONSORT

FRI., DEC. 4 ■ 8 P.M. ■ \$12.00  
A special engagement with Renaissance jazz artists playing traditional Christmas Carols from around the world.

## NO PRISONERS WITH OPENING ACT F.C.C. JAZZ ENSEMBLE

FRI., SEPT. 25 ■ 8:00 P.M. ■ \$12.00

One of Fresno's most popular jazz bands will share the stage with the next generation of artists from Fresno City College.



Dean Rhodes, Artistic Director

## TURTLE ISLAND STRING QUARTET

THUR., NOV. 19 ■ 8 P.M. ■ \$12.00

Windham Hill recording artists play new music for the Inner City featuring jazz, swing, R&B, folk and blues from classically trained string instrumentalists/composers.



Acknowledgements:  
Fresno Unified School  
District  
Music Educators  
Music Students  
Hilton Hotel

Z96.7

## BOX OFFICE

ADVANCE TICKETS AT CHARLIE DANIELS MUSIC AND MILLER SHEET MUSIC. WARNORS BOX OFFICE DAY OF SHOW ONLY — ALL SEATS GENERAL ADMISSION. DOORS OPEN AT 7 P.M. PERFORMANCES ARE AT WARNORS/STAR PALACE, 1420 FULTON

Partial Proceeds go to the Fresno Unified School District Music Program (\$5.00 dollars from each ticket sold will be donated for music in the schools. Those who wish to make a further contribution can contact the FUSD Music Dept. at 441-3685.

AN RMI CAGLIA PRODUCTION  
**CULTURAL ARTS DISTRICT**  
THEATERS, GALLERIES, MUSEUMS, ARTS ORGANIZATIONS, NEAR COURTHOUSE PARK,  
FINE EATERIES, LODGING. FRESNO'S CENTER OF HISTORY, CULTURE & COMMERCE

It's lonely at the middle.

**MR. SATURDAY NIGHT**

CASTLE ROCK ENTERTAINMENT IN ASSOCIATION WITH NEW LINE CINEMA PRESENTS A FACE PRODUCTION BILLY CRYSTAL "MR. SATURDAY NIGHT" DAVID PAYMER  
JULIE WARNER HELEN HUNT AND RON SILVER PETER SCHINDLER MARC SHAIMAN KENT BEYDA, A.C.E. ALBERT BRENNER  
DON PETERMAN, A.S.C. LOWELL GANZ AND BABALOO MANDEL BILLY CRYSTAL AND LOWELL GANZ BABALOO MANDEL  
CASTLE ROCK NEW LINE CINEMA OPENS SEPTEMBER 25TH BILLY CRYSTAL



Wall of Fame athletes inducted

# Rams lose season opener to Pasadena 17-20

By Robert Azua  
Rampage Reporter

On Saturday, Sept. 12, the FCC Rams took on the mighty Lancers of Pasadena College. Unfortunately, the Rams were not able to defeat the Lancers. The Rams lost 17 to 20.

In a devastating game, the Rams were greatly disappointed by the Lancers. The mighty defense of Pasadena College proved to be too much for the Rams, who came to the game with high hopes, thinking that they would clearly dominate.

The Rams were more than ready to take on their opponent. They were pumped up, aggravated, and ready to win the game. As the players headed into the field, fans cheered. The team was fired up, ready to play.

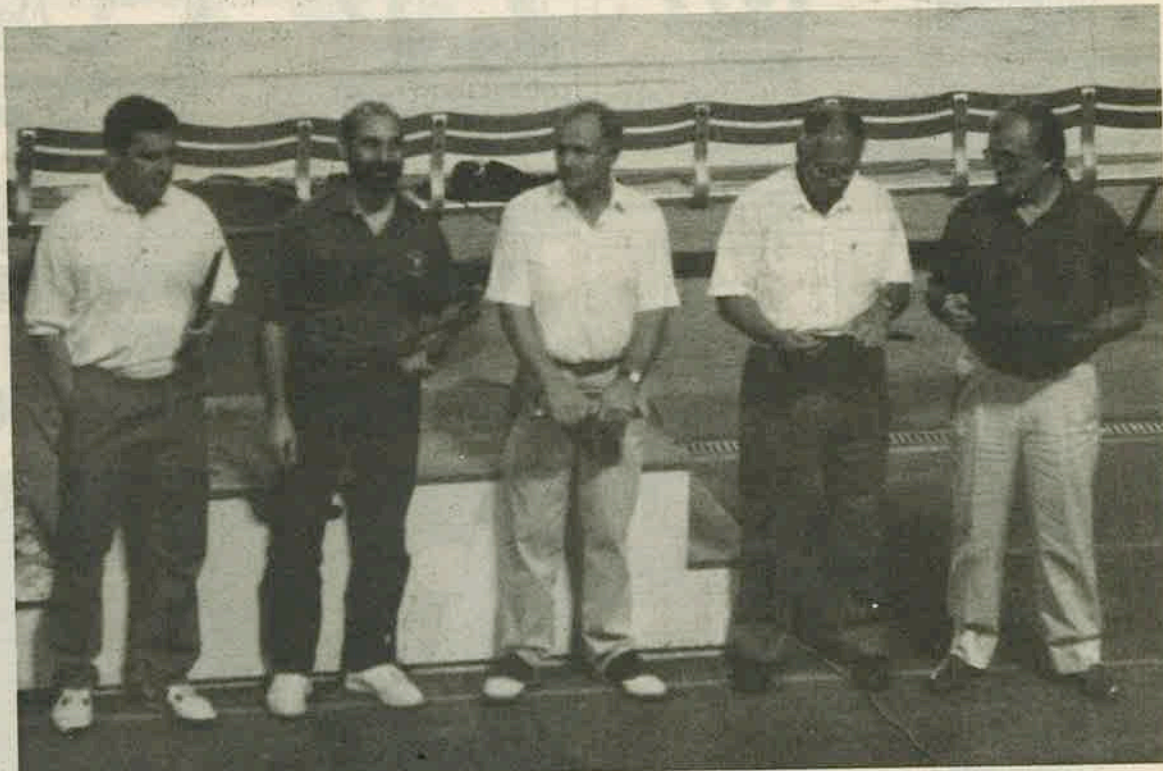
As the game progressed, neither of the two teams would give up ground nor points. The mighty Lancers defense was stopping anything and everything that they encountered from the Rams. The Rams defense, also seemed to be working great against the Lancers, holding

them to only a field goal late in the first quarter.

As the first quarter ended, the scoreboard read Rams 0-Lancers 3. At the start of the second quarter, the Rams knew that they had to get some points on the board before half time.

With the second quarter underway, the Rams offense scored, raising the score: Rams 7-Lancers 3. With still enough time for the Lancers to score, it was going to be up to the defense to stop them. The Rams defense was great, but there were two fumbles in the second quarter. For two 15-minute quarters, the Rams defense managed to stop them cold, allowing only a field goal late in the first quarter. As the first half ended, both teams looked good.

As the second half started, both teams were once again ready to play. During the beginning of the third quarter, the Lancers dominated the Rams defense and managed to make a field goal. Later in the same quarter, the Lancers also managed to make a touchdown. It looked impossible, but the Lancers had come



This Years Wall of Fame Inductees from Left to Right; Bob Glazbook (his brother accepted), Vic Lamanuzzi, Dewy Belli, Dick Yeeny and Bill Musick

Rampage Photo by Joe Sanchez

## Tailgating para-legals

By Robert Azua  
Rampage Reporter

Last Saturday afternoon, the majority of clubs were asked to participate in selling goods at the annual tail gate party. The event was held from five to seven p.m. in the men's soccer practice field, in front of the football field.

At the tailgate party, few

showed up. Those attending said they had fun, and there was food offered by Social Paralegal Association.

Although there was little club participation, or competition, the Student Paralegal Association Club Showed. According to Deanna Estes, of (Public Relations) SP A had a very successful rummage sale. SPA said they enjoyed themselves.

from the bottom and roused up to the top. At the end of the third quarter, it was the Rams 7 - and Lancers 13.

Now the Rams were trailing. With only one quarter remaining, it looked bad for the Rams. All they Rams needed was a touchdown and the point after.

It looked like the Rams might just make it. Early in the fourth quarter, the Rams managed to kick a field goal, making the score FCC, 10 PCC 13. Then, in their next possession, the Lancers scored another touchdown in the middle of the fourth

quarter, making the task harder for the Rams to catch up. The score now read Rams 10, Lancers 20.

With less than two minutes remaining, the Rams scored on an offensive play. Fresno's Quarterback went in for the touchdown. Now the scoreboard read Rams 17 and Lancers 20. With just a few seconds remaining, the Rams decided to try an onside kick (ten yards or more), but it backfired. The kicker kicked too hard and long, making the Lancers secondary special team player able to pick it up, and run for a large gain. The game ended with the a couple of kneel downs of the quarterback. The FCC Rams fell to Pasadena Lancers. The Rams will be 0 and 1, going into next week's game against San Jose City College.

### FOOTBALL SCHEDULE

Sept. 26, - Butte College
Oct. 3, - Chabot College
Oct. 10, - BYE
Oct. 17, - Sacramento C.C.
Oct. 24, Santa Rosa J.C.
Oct. 31, - Merced College
Nov. 7, - Taft College
Nov. 14, - American River
Nov. 21, - College of the Sequoias
Dec. 5, - Dairy Bowl

## News Notes from page 6

Sunday, October 4- The Fourth Annual Tri-Athletic Action Triathlon for wheelchair athletes will be held at Clovis West High School. Registration is at 7 a.m. with competition starting at 8. It is open to any wheelchair persons, of 14 years or older, and you don't need a racing wheelchair to participate. The fee is \$15, which can be waived if necessary. No one will be denied participation. Individual and team entrees will consist of, swimming, biking (by means of a hand powered bike), and a road race. There are beginner and intermediate divisions. For more information or to register call Allen Roope at (209) 442-6414 or (209)

877-4721

October 10th - Wednesday Night at the Psyche, is a monthly seminar offering a review of modern films and discussion of their implications for psychology, psychotherapy and human nature. This month's discussion is about "The Fisher King." Times are 6:30-9:00 pm. Call 292-7572 for registration and more information.



ONLY YOU CAN PREVENT FOREST FIRES.  
A Public Service of the USDA Forest Service and your State Forester.

## CLASSIFIEDS

4-drawer chest—\$29.95. Quilted Mattress, box spring, headboard and frame \$99 up. 5 piece dinette \$99. Student desk \$49, bookcase \$29, sofa and loveseat \$169, 5 piece bedroom set \$149. 3-piece table set \$99, touch lamps \$18. Hall's Furniture, 3502 E. Belmont at 5th. 486-4255.

DENTAL SERVICES —New student dental plan—Office visit, teeth cleaned and X-rays no charge. Save money and your teeth. Enroll now. For brochure, call 800-3225.

## HobbyTown USA presents BATTLECON I GAMING CONVENTION

★ GUEST SPEAKERS ★ DEALERS ★ FEATURES ★  
★ TOURNAMENT GAMES ★ OPEN GAMES ★  
★ AND MORE! ★ STUDENT DISCOUNT ★

### Oct. 3rd thru 4th at the Fresno Hilton

For further information, call  
**435-3342**

## CATHOLIC STUDENTS

ST. PAUL NEWMAN CENTER

Welcomes you!

We are a Catholic University parish serving students, faculty and staff at CSUF & FCC.

We offer programs that serve both your social and spiritual needs.

For more information, call 439-4641, or stop by the center at 1572 E. Barstow, (across from Bulldog Stadium)

R.C.I.A.  
Tuesday  
7pm

FREE SUPPER  
Wednesday  
6:30 pm

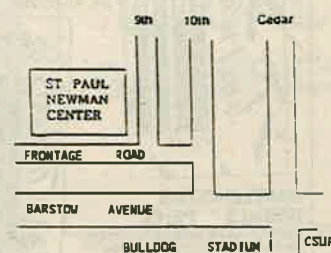
BIBLE STUDY  
Thursday  
7pm

STUDENT MASS  
Sunday  
8pm

PLUS...

DAYS OF RECOLLECTION—PEER MINISTRY—RETREATS—  
TAIZE PRAYER—VOLLEYBALL—SOFTBALL—  
COMMUNITY SERVICE—COUNSELING—CHOIR—  
SPIRITUAL DIRECTION—DANCES—SOCIALS—SPECIAL EVENTS

AND MORE!





**COMPUTERS**

386SX/25 SUPERSYSTEM  
AT A GREAT  
BIZMART PRICE!

**EVERYDAY  
\$1099<sup>99</sup>**

**III LASER**  
386SX/25  
SUPERSYSTEM 100

- 80386SX, 25MHz
- 2MB standard RAM
- 100MB hard drive
- Dual floppy drives
- 14" VGA color monitor
- Keyboard
- Mouse
- Microsoft Windows
- Microsoft Works for Windows

#4503015

**COLLEGE STUFF**

T-SHIRT  
EVERYDAY  
**\$9<sup>99</sup>**

SWEATSHIRT  
EVERYDAY  
**\$19<sup>99</sup>**

**JANSPORT**

**COLLEGE LOGO T-SHIRT**  
Rugged 100% cotton compacted heavyweight jersey with quality taped shoulders & double-needle coverstitched hems. #1010984.

**COLLEGE LOGO SWEATSHIRT**  
Heavyweight 50% cotton/50% polyester fleece features quality construction, detailing and generous athletic cut. #1010981.

**FURNITURE**

EVERYDAY  
**\$194<sup>99</sup>**

Accessories not included.

**O'SULLIVAN INDUSTRIES, INC.**

**COMPUTER WORKCENTER**  
Functional furniture with colonial oak laminate finish. Includes hutch, pull-out printer cart with adjustable shelves, large letter-size file and box drawers, sturdy pull-out keyboard shelf, CPU shelf and raised monitor platform. 48 1/2" x 59 1/2" x 23 1/2". #2001562.

**WE DELIVER!**

BIZMART DELIVERS  
486SX/25MHz  
PERFORMANCE  
MONITOR,  
PRINTER &  
CABLE ALL AT  
ONE  
LOW PRICE!

**Professional EXEC-4000™**

- 486SX, 25MHz
- 2MB standard RAM
- 85MB hard drive
- Dual floppy drives
- Keyboard

**YOU GET ALL THIS FOR ONLY  
\$1499<sup>99</sup>**

- Mouse
- MS-DOS 5.0
- Microsoft Windows 3.1
- PFS:Windows

Monitor sold separately. #4503257.

**Professional SVGA MONITOR**  
Color 14" .28mm-dpi SVGA monitor. #4503071

**star NX-1001 MULTI-FONT PRINTER**  
The ideal feature-packed 9-pin dot-matrix printer for small businesses! Has five resident fonts, 10 sizes and eight enhancements. #4501874

**PRINTER CABLE**  
Six-foot parallel printer cable. #4501838.

**WHO IS LOWERING  
THE COST OF  
HIGHER EDUCATION?**

**BIZ**

EVERYDAY  
**\$9<sup>99</sup>**

BLACK OR BURGUNDY

**CAMBRIDGE IMPRINT PADFOLIO**  
Vinyl 8 1/2" x 11" pad holder with pen holding loop. Available in black or burgundy. #1010964.

EVERYDAY  
**\$1<sup>69</sup>**

90 SHEETS

**AMPAD WIREBOUND NOTEBOOK**  
One-subject 11 x 8 1/2" notebook with pocket. 90 sheets. #1009801.

**JANSPORT**

**EVERYDAY  
\$19<sup>99</sup>**

**SUPER BREAK BACKPACK**

The campus carryall! Durable, water-resistant Cordura™ nylon. Has large zippered front pocket and "Key-Per" key holder. #1010956.

Why pay more at the bookstore? BizMart has those college must-haves at super-low everyday prices. With over 10,000 products, you'll be surprised at what you'll find. We've got everything you need from classroom to dorm room, even T-shirts and sweatshirts with many popular local-college emblems! BIZ IZ big on campus.

EVERYDAY  
**79¢**

CHOOSE FROM WHITE, BLUE, RED OR GREEN

**2-POCKET PORTFOLIO**  
Attention-grabbing laminated paper portfolios in white, blue, red or green. #1010955.

YOUR CHOICE  
EVERYDAY  
**59¢**  
PER SET

**BIZMART RING BOOK INSERTABLE INDEXES**  
Our finest indexes. Heavy duty white ledger paper with three holes for standard ring binders. Typewriter-spaced inserts for changing titles. Five tabs. Letter size. #1001620 Assorted Tabs. #1001622 Clear/5 Tabs.

EVERYDAY  
**\$2<sup>99</sup>**

CHOOSE FROM BLACK, BLUE OR RED

**KEITH CLARK COLLEGE IMPRINT PLANNER**  
5 x 8" weekly planner. August 1992-July 1993. One week per two page spread. Available in black, blue or red. #1011046.

**BIZ IZ**

EVERYDAY  
**\$9<sup>99</sup>**

CHOOSE FROM BLACK, BLUE, RED OR TEAL

**mead FIVE-STAR FIRST GEAR ZIPPERED BINDER**  
3-ring binder with tough nylon case and pockets for papers, calculator, pens & more. Choose black, blue, red or teal. #1011662.

**BIC**

EVERYDAY  
**\$1<sup>79</sup>**

YOUR CHOICE  
**SHIMMERS PENS**  
Colorful BIC Shimmers pens with translucent color-tinted barrels and ink in hot fashion colors. Assorted 6-pack with two turquoise, two purple, one lime green and one pink pen. #1009028.

**HEATWAVES BALL POINT PENS**  
Retractable ball point pens in exciting neon colors. Four-pack assortment. Medium points, blue ink. #1009030.

**WAVELENGTHS TRIBALS™ PENS**  
Colorful totem-pole tribal-design medium-point ball pens. Three with blue ink, three with black ink. #1010886.

EVERYDAY  
**\$2<sup>99</sup>**

6 DOZEN PENCILS

**DIXON ORIOLE #2 LEAD PENCILS**  
Break-resistant commercial B-grade lead and quality pink eraser. Six dozen. #1009343.

**ELECTRONICS**

EVERYDAY  
**\$59<sup>99</sup>**

**ROYAL 8500PD PROFESSIONAL PRINTING CALCULATOR**  
Heavy-duty calculator features high-speed black and red ribbon printing with comma separation. Extra-large & bright 12-digit display. AC power. #3002319.

EVERYDAY  
**\$15<sup>99</sup>**

**BELL Phones**  
BY NORTHWESTERN BELL PHONES

**THE 150 SLIM-STYLE TELEPHONE**  
Built with Genuine BELL™ reliability and durability! Features three fast-dial emergency buttons and 10 auto-dial numbers. Lighted keypad. For desk or wall. #3002506.

FRESNO

BIZMART

2044 W. SHAW  
(209) 449-2550

**BIZMART IS BIZSMART**

10,000 BIZNESS PRODUCTS, 7 DAYS A WEEK

**NEXT DAY DELIVERY**

Get More Purchasing Power with BIZCHARGE!

**STORE HOURS**  
Mon-Fri 8:00 AM-9:00 PM  
Sat 9:00 AM-9:00 PM  
Sun, 12:00 PM-6:00 PM

1-800-688-6278

Most major credit cards accepted

BIZMART has made every effort to ensure the prices listed are accurate; however we are not responsible for typographical or pictorial errors. We reserve the right to limit quantities. BIZMART will meet or beat any current, locally advertised price on any of the 10,000 products that we stock.