

## Tennis Teams Red Hot

See Story, page 2

Ouch!

Fresno City College

Friday, April 16 1982

Volume 37, Number 22

# Rampage

Vice-president says wait and see

## ASB Nixes Lawyer

by Sam Williams

Associated student body vice-president John Simmons broke a 2-2 deadlock and voted against hiring a lawyer to represent students on the instructional materials fee issue.

Simmons said he voted against the lawyer because he wanted to "wait and see" if a bill proposed by State senator Ken Maddy passes committee hearings on April 14 in Sacramento.

The bill calls for charges of up to \$100 a year for community colleges.

The senate is planning to send representatives to the hearings to oppose the fees.

The Rampage is planning to cover the committee hearing. Simmons said if the bill passes he will not be able to continue his education.

J.V. Henry, who has practiced law for 15 years in the Fresno area, was present at the senate meeting. He made a presentation and outlined his strategy. He advised the senate to wait and see if Maddy's bill is just "Republican smoke" or if it is a valid bill.

Henry said if the bill passes, opposition to instructional materials fees would be "sunset law" and have little benefit for students.

ASB president Grant Marcus, who has had several meetings with Henry, stormed out of the chambers after the senate's decision.

Marcus said money spent on a lawyer would give a "good return on our investment."

Marcus compared the Senate's allocation of money for a conference and money for a lawyer. He said it was a "sham to spend money on cookies and punch and deny students protective rights."

Later, Marcus said he would veto the conference allocation.

Henry gave the senate his "thumbnail opinion" of the proposed fee. He said two points of the fee issue are very clear.

Henry said, "The school cannot charge you a fee as a substitute for tuition."

He said the fee must "relate to materials which become the personal property of the student."

Henry said, due to ASB budget considerations, "I've recommended you do not file litigation at this time against the school but that you make an initial budget commitment to allow me to spend some book time on the problem and have it well nailed down and then essentially write a threatening letter to the school administration saying that the proposed fee schedule that they've adopted is illegal."

Henry said his advise was based on Marcus' political evaluation of the administration's position on fees. He said Marcus believes the administration will not charge a fee for some classes if it has to prove the value of materials that become the personal property of the student.

The administration feels the proposed fee is legal.

Fresno City College dean of instruction Dr. Arthur Ellish said, "The instructional fees must be approved under existing law. From my understanding of what has been discussed so far, the fee meets the county counsel's interpretation of the law."

The county counsel is the lawyer for the district and other county governmental bodies.

A campus spokesman said if the district is forced to prove the value of materials, the fees could be even higher. He said the district is not recovering the full value of materials given to students.

Student trustee Tamra Kleinhammer was concerned about whether Henry would represent all students, the task force, or the senate.

Marcus said, "I formed the STF/EOE as a task force of the president." He said the senate had endorsed the task force and the senate now could take part in one of the actions of the task force.

"If the senate wants to go through with this, it's the senate's expense and the senate has a lawyer. It doesn't fall under the student task force at all," said Marcus.

ASB treasurer Mark Suddjian said, "I've been talking to task force members and former task force members, I don't know if giving money to a lawyer might just be a dead end when the task force comes to a dead end, because those are the students who are interested actively in this issue."

Suddjian said he attended the last board of trustees meeting in Reedley where Marcus asked the board to endorse the task force. He said he was sure there was no chance of the board endorsing the task force.

Suddjian said, "I don't know if it's the right thing to put money down for this lawyer for a group that doesn't have recognition."

"It's one thing to endorse the task force," said Suddjian, "but my two concerns are the longevity of this task force which is spearheading this effort and its effectiveness. With every task force meeting there's been a third as many people as before. We have to look at this whole thing. How far is this task force going to be going? Otherwise we may be giving money to a lawyer that isn't going anywhere."

Marcus said, "The effectiveness of the STF/EOE and so forth is a moot point here. The senate has a chance to act to protect student rights. It's a senate action. It can be a senate lawyer. Don't use the excuse of whether the student task force is succeeding or failing. I think the senate will have failed students to not at least initiate a lawyer."

Henry said, "I am not interested in dealing with the situation if it is a divisive situation amongst the student body." He said he understood the student body was united against the fee and that it affected all students at FCC.



AWARD, CAKE, AND ROSES

Photo by FCC News Service

Fresno City College Veterans affairs assistant Mattie Montgomery was honored at a recent reception. From left are Mark Riley, Mattie Montgomery, and Dan Olivo. Montgomery was recognized for her outstanding service for veterans.

## Students Honor Veterans Advisor

by Nina Tinker

Mattie Montgomery, veterans affairs assistant at Fresno City College, was honored with a reception on March 25 in the student services building. Senate members Dan Olivo, president pro tem, and Mark Riley, work study program participant, organized the affair in recognition of Montgomery's over eleven years of dedicated services to veterans and their families.

Robert Fox, FCC Dean of Students, worked with Assoc-

iated student body officers to make the occasion a memorable one for Montgomery.

FCC President Dr. Clyde C. McCully, Fox, Lee Farley and guests, gave Montgomery a warm round of applause as Olivo and Riley presented her with an engraved plaque in recognition of her services. A large bouquet of red roses and two specially decorated cakes were also presented. The senate members present introduced Montgomery to those not acquainted with her and helped serve the cake and

coffee.

Montgomery came to FCC in the early seventies as a clerk typist. Eventually she found the chance to work with the veterans. Fox cited the many nights that Montgomery worked in her office with and for veterans who needed help with special problems.

The recognition was for the ongoing service and help Montgomery has so willingly extended to veterans. Many veterans feel she has earned a special place at FCC.

## Summer Registration Announced

by Dan Immel  
Rampage Reporter

Fresno City College students will register for the summer session on June 8, 9, and 10.

Registration will be held in the Student Services building from 8 a.m. to 11 a.m. and 12 noon to 3 p.m.

Late registration will be held from 7 a.m. to 11 a.m. and 12 noon to 3 p.m. from Monday, June 14 through Wednesday, June 16.

Though late registration appointments will only be scheduled for June 14, the registration offices will be open for those students who missed their regular appointments or were unable to complete their registration during the regular period.

Monday, June 14 will be the last day to apply for admission for the 1982 summer session. All late registration must be completed by Wednesday, June 16.

Students wishing to change their program may do so during late registration. All program changes must also be completed by the June 16 deadline.

All late registration and program changes will be conducted in the admissions office and the records office on the lower floor of the Student Services building.

## CSUF Limits Enrollment

by Dan Immel  
Rampage Staff Writer

Tentative plans at California State University, Fresno to limit the enrollment of new students will become effective by next spring should the number of admissions continue to outpace state funding, said CSUF officials.

The California State University system has instructed all campuses throughout the state to develop plans that would limit enrollment.

Enrollment at state universities is expected to rise next year, but officials at CSUF feel the plan will not affect enrollments this fall.

Enrollment in the spring however will likely be limited. CSUF officials said the main factor determining when the limitations would become effective is the number of new students, resident or non-resident, who apply next year.

This spring a record 15,616 students enrolled at CSUF, up more than 2 percent from 1981.

However it is the number of full-time students that is considered in determining the amount of state funds CSUF receives.

More than 13,100 full-time students enrolled at CSUF this semester but the university received state funding for only 12,700.

CSUF receives \$4,124 for every full time equivalent (FTE) student from the state's general fund. Next year \$4,270 per student will be received under Governor Brown's proposed budget.

However, officials pointed out, the governor's budget will provide funds for only 12,980 FTE in 1982. Since CSUF is seeking funds for 13,280, the enrollment plan will limit FTE admissions to 12,980 by restricting enrollment of new students.

Earlier this year CSUF officials faced an operating deficit of over \$1 million. The problem was made worse by rising enrollments and increased cuts in state and federal funding for education. CSUF imposed

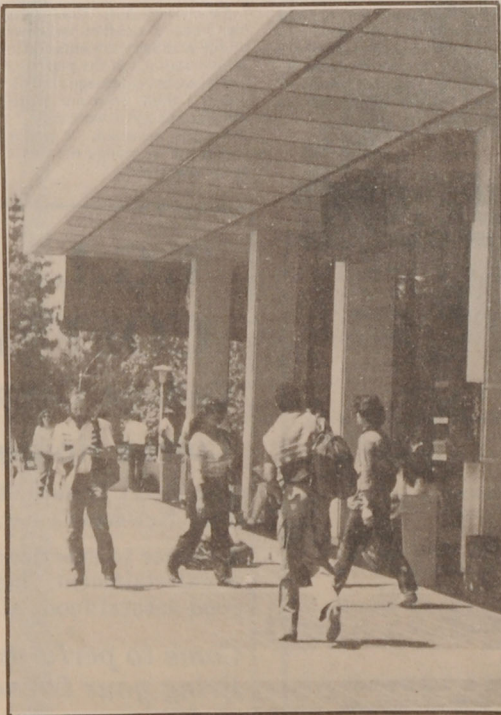
budget cuts and CSUF officials now feel confident of finishing the fiscal year in the black.

Officials believe the CSUF plan to limit enrollments will be flexible enough to meet the demands of the various schools and departments on campus.

CSUF officials said that applications will be monitored to categorize the number of upper- and lower-division students and the number of graduate students.

Basically, the CSUF plan will insure limitations by restricting the number of graduate students. The number next year should not exceed the number this year, officials added. Also resident students will be given priority over non-resident students, said officials. Upper-division students will be given priority over lower-division students.

Plans to limit growth have already been instituted by CSUF in the schools of business and engineering.



**CSUF STUDENTS** — CSUF may have fewer students next semester due to budget restrictions. Luckily, for FCC students, resident transfer students will be given priority.





Rampage photo by Julie Kienast

**OPPOSED TO FEES** — Grant Marcus and the STF/EOE enjoy a pizza during a recent meeting. They are considering legal action against the district to ensure no student is denied an education because of income.

## Exclusive Rampage Interview

# Marcus Speaks

by Julie Kienast  
Rampage Reporter

In a wide-ranging interview, Associated Student Body President Grant Marcus recently spoke his mind on a number of issues affecting Fresno City College students.

Marcus said he will be discussing with an attorney the problems of student fees. "One of the reasons I am looking into engaging a lawyer is that legal assistance is the best possible effective way to protect student rights."

He said he will ask the ASB to absorb the cost or part of the cost of the attorney after determining if the ASB has any legal grounds.

Marcus said, "The difference between me and the administration is not that we don't need money. We are in agreement on that. The difference is in the way to get the money."

Marcus added, "The chancellor's office said student fees would be the easiest and quickest way to get revenue. I don't feel that is the best way to get revenue."

Marcus said the task force has 25 to 40 students, ASB student at large Mark Knipper estimates task force membership between 15 and 25. Marcus said, "Carrying out the resolutions of the task force without impact to low-income students was its main goal."

The school's policy is that no student should be denied equal

education because of race, creed, religion or sex. Marcus believes income should also be

included.

Marcus wants to form "an advisory committee to look into the revenue. It would include students, faculty, administrators, and community," and community.

He also feels that "the best way for FCC to prove it needs money is to use the reserve. The State of California said that community and state colleges should not have reserves. The best way to prove they need money is to use that reserve."

Marcus would also evaluate priorities and hold concerts in the summer to raise money. "The chancellor's office has 13 people paid for by the district to come up with revenue," Marcus said. "After five months of hard work, they have managed to come up with an estimated \$200,000 in student fees."

"I would hire someone for \$15,000 or \$20,000 per year to establish the FCC foundation and hustle money from the community," Marcus added.

## Related Editorial back page

Marcus also commented on a Rampage story that reported he had said FCC instructor Luis Sosa had been "threatened" by the college administration for not supporting the material fee.

Marcus said, "In no way did I say Sosa was threatened. However I do believe pressure is being applied at the administration level to both students and faculty who did not take the administration's position on charging fees."

Marcus said, "It was more pressure than threats. If teachers come up in favor of student fees the administration sends them a thank you note, which is a way of letting the others know they are not thanking them. End result, they are applying pressure to those who do not agree."

"The Sosa letter was for STF/EOE use only. Sam Williams sort of grabbed it along with other papers. However the letter does illustrate what happens to teachers who support students and oppose student fees," said Marcus.

When reached for comment, Sam Williams, Rampage Editor said Marcus called the letter threatening. Williams said Marcus passed a copy of the letter around a circle of Task Force members to him.

"As long as I am ASB president I will do my best to see that no student is deprived of an education because of income," Marcus said.

Marcus said, "I have been at FCC three semesters and they will have to put up with me for two more years. I plan to run for ASB president next semester. It's been a trying time, but a learning experience. I wanted to experience student government."

Marcus also said, "I feel there has been a conflict between myself and Sam Williams and it should stay out of the papers. I feel I have been damaged by the paper. I think Sam and I are sensible enough to work it out."

Marcus asserted, "I am a liberal but in money matters I am a conservative."

# Biggs Consort at FCC

by Chris Comstock  
Rampage Reporter

A concert of medieval, renaissance and contemporary music for voice and instruments was presented by the John Biggs Consort in the Fresno City College library reference room on Sunday, March 28. The concert was sponsored by the FCC community services office.

The current members of the group, along with John Biggs who sings bass, are Eileen O'Hern, soprano; Lou Robbins, alto; and Paul Brian, tenor. While many of the selections they present are a cappella, or without instrumental accompaniment, others include the use of medieval instruments such as the krumphorn (which looks like a J-shaped flute), recorders, hand bells, hurdy-gurdy, and portable organ, which is small and hand-pumped.

Music performed by the

Consort ranges from Gregorian chants to modern electronic music. In this concert, they presented religious and secular numbers from France and Italy in the 13th to 17th centuries, and songs from England and Spain of the same period.

Also presented was the "Soliloquy from Planet Earth, Invention for Mime and Tape," composed by John Biggs, which is a representation of the last survivor on earth after a nuclear holocaust. In contrast to the chants and medieval folk songs, the dissonance of the taped music and dying sounds make this a shocking, almost too-believable portrayal of the last sound on earth.

In 1968, when Biggs was a composer-in-residence at Kansas State Teachers College, the Consort was featured in a film, "Discovering the Music of the Middle Ages." The film won the Venice Film Festival Award and the Golden Eagle Award in

America. It featured medieval music and was filmed in full costume with shots of English castles and countryside.

According to the program, the late Basil Rathbone chose the consort to accompany his "One Man Shakespeare" presentations. They have appeared at the Ashland Shakespeare Festival. The Consort has also won the Esther award for its performance at the Los Angeles Music Center in January 1972.

For history buffs, the program was very interesting. One presentation was "La Volta" composed by William Byrd in the 16th century. This was a dance which Biggs said Queen Elizabeth particularly liked to perform with her favorite, the Earl of Leicester.

The small audience might have been an advantage in establishing rapport. Listeners seemed to appreciate Biggs' historical explanations of the numbers.

# Tennis Teams Burn Opponents

by Bob Millar



Rampage Photo by Terry Pierson

**OVERHEAD SMASH** — Phil Radanovich serves in a recent match at the FCC tennis courts.

Fresno City College tennis teams are red hot. The men's team is undefeated after 12 matches and the women netters are looking at a 9-4 record after 13 matches.

Swinging rackets for the men's team are sophomores Mark Tetzlaff, Russ Takeuchi, Mike Goosen, and Mike O'Hara.

Freshmen netters are Alan Guthrie, Mike Shirk, Kevin Dong, and Phil Radanovich.

Takeuchi was the Ram's winningest player last year, boasting a 12-2 singles record, while teammate O'Hara recorded a respectable 10-3 mark.

In conference play the men are 9-0, having shut out Kings River twice, routed West Hills twice, and swept a pair from Porterville. The Rams have also handed losses to the College of the Sequoias, Modesto, and Columbia College.

Making up the roster for the women netters are sophomores Lori Gann, Shari Smith, Diane Mansheim, and Karen Ledee.

Freshmen women netters are Gina Giampietro, Maggie Martina, Susan Irvin, and Cynthia Montez.

The women are currently holding an impressive 8-1 conference record. They have dropped Kings River twice, routed Porterville a couple times, stomped West Hills twice, and have also defeated COS and Columbia College. Their only setback was to Modesto.

# Band Wins Awards

by Julie Kienast  
Rampage Reporter

Fresno City College's jazz band took first place in the Clovis Jazz Festival on February 27. Four of the band members won outstanding performance awards.

The awards went to Mark Freitas, lead trumpet; Becky Kennard, alto sax; Scott Hunter, bass; and Jim McCarty, drums. The entire trumpet section won an award.

The judges were professional musicians from different parts of the country. One of the judges was Max Vax, formerly with Stan Kenton. He now has his own band.

The jazz band will give a concert April 15, at 8 p.m. in the FCC theatre. Ken Foberg a professional trombonist from Los Angeles will be a feature guest artist.

The band is going on a three-day tour April 22-24. On April 22, it will play in Monterey. On the following two days it will compete with 150 college jazz bands at the Pacific Coast Collegiate Jazz Festival at UC Berkeley.

Part of the competition is based on performance and sight reading.

FCC music instructor Robert Nielsen leads the jazz band. He is also the principle trumpet player in the Fresno Philharmonic Orchestra. He has taught at FCC for four years.

Nielsen said, "The FCC jazz bands have a long tradition of winning awards." He credits much of the past success to the work of the late Gilbert Rodriguez, who directed the jazz band for many years before his death in 1981.

# Rampage

Serving the over 16,000 students, faculty, and staff of Fresno City College. The Rampage is published every Friday, except holidays, by the journalism department of

Fresno City College  
1101 East University Avenue  
Fresno, California 93741  
(209) 442-4600, Ext. 8723, 8737

The opinions expressed in the Rampage are those of the writers and not necessarily those of the editor, advisor, staff, or the administration of Fresno City College.

Editor . . . Sam Williams  
Photo Editor . . . Terry Pierson

Reporters . . . Dale Cahill, David Campos,  
Chris Comstock, Julie Keinast,  
Dan Immel, Bob Millar,  
Brian Short Larry K. Wiemiller

Artist . . . Janice Harrell  
Advisor . . . Jim Piper

The Rampage office is located on the northwest corner of campus in B-3. The Rampage welcomes letters to the editors. All letters must be type written and double spaced, and include the author's name, although pen names may be used.

All letters to the editor should be under 200 words. The Rampage reserves the right to edit any letter to the editor for clarity and brevity.

# T.G.I. COFFEE College Community Coffee House



Open Every Friday, 8:00 to Midnight,  
at the Newman Center, 1572 E. Barstow Ave.

A chance to experience a wide range of entertainment, fine coffees and good natural foods at student prices.

*Come to perform or just to enjoy.  
Bring your friends or come and  
make new ones.*

Call Cathy Demonte at 224-1516 evenings if you are interested in providing some entertainment and would enjoy the exposure.

## KENJU STUDIO

### Martial Art Classes

1441 East Belmont Avenue  
Call 229-9616 after 6:00 p.m.

Sensei Craig Tinker-Nidan

## Valley Women's Service Medical Group

A Family Planning Service offers . . .

- Confidential Family Planning Services
- FREE
  - Pregnancy Testing (early pregnancy screening) and Alternatives
  - Problem or Unplanned Pregnancy Counseling
  - Birth Control Information
  - Sterilization
- PREGNANCY TERMINATION
  - General (asleep) or Local Anesthesia
  - Medi-Cal and other insurance accepted
  - Confidential - Personal Care

**225-5180**  
125 E. Barstow, Suite 135, Fresno, CA 93710



Lounge Contests  
Net Few Entire

by David Campos

Last week chess and backgammon tournaments began in the FCC student lounge. Lounge hostess Sylvia Harris said that there was a small turnout for both events.

In the first round of chess Quincey Maxey beat Stan Kemp. In another game Mark Reyes lost to Klifton Anderson. In the final round Anderson met Maxey. Anderson won leaving second place to Maxey and third to Reyes. Harris said she expected more chess players in the tournament.

"Someone always wants to challenge somebody else," she said.

In backgammon, Alan Dervishian defeated Anna Damian. In a second game, it was Gage over Walker.

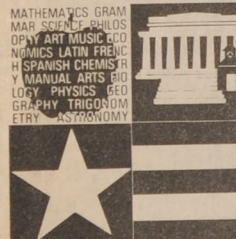
In the final round Dervishian played Gage. Gage won, Dervishian placed second, and Walker placed third.

The tournament continued with pool and ping-pong competition. Sylvia Harris said, "Pool had the highest turnout of all of the events." According to Harris, 31 of the 54 sign-ups showed up for the event. After two rounds the pool tournament was narrowed to 13 people. After three days of competition, Ron Craig won first place, J.D. Perry second, and Jeff Janzen third.

Ping-pong had a much smaller turnout with only 14 of 26 signed up competing, said Harris. After elimination rounds, Bruce Walker, J.D. Perry, Louis Cantu, Thompson Ademuyiwa, Forrest Scott and Mark Reyes were left. In the semi-finals Thompson beat Scott, and Perry beat Reyes. In the finals Thompson beat Perry. Perry and Reyes finished in a tie for third. Harris said there were no entries for doubles ping-pong. Trophies were awarded on April 13.

PUBLIC SCHOOLS  
TEMPLES OF KNOWLEDGE

MATHEMATICS GRAMMAR SCIENCE PHILOSOPHY ART MUSIC GODS HISTORY LATIN FRENCH SPANISH CHEMISTRY MANUAL ARTS BIOLOGY PHYSICS GEOGRAPHY TRIGONOMETRY ASTRONOMY



Visit Your Schools during Public Schools Week in April

Student Art

The Fresno City College art department is hosting its annual student art exhibit and competition from April 12-30 in the college's Art Space Gallery.

The student show will present drawings, prints, paintings, sculptures, ceramic works, and weaving crafts. Many of the works will be offered for sale.

An opening reception for the art exhibit will be held on April 13 from 7-8 p.m.

The show is being judged by art instructors Amy Kasai of Kings River Community College, Reedley and Rod Harder of Pacific College.

Sabia

Latin folk music will be performed in the FCC Theatre Sunday from 2:30-4:30 p.m.

The concert will be performed by "Sabia," a four-woman group. The group performs Latin music with an emphasis on the contributions of women. Tickets-\$5 at the door.

ASB Petitions

Petitions for All Associated Student Body elective offices will be available beginning Monday, April 12, at 10 a.m. Students can obtain the petitions at Counter "A" of the Admissions and Records Office. Completed petitions must be returned to the Student Affairs Office, Room 225, before noon Tuesday, April 20, 1982.

Dance Concert

Fresno City College will present a pair of dance concerts featuring the college's own dance students and the Cabrillo College Dance Ensemble.

The first concert in the series will feature the Cabrillo College group. The concert will be April 16 at 8 p.m. in the FCC Theatre.

The second concert will be held on April 29, 30, and May 1 at 8 p.m. in the theatre and will feature the FCC Dancers.

Advising Week

Academic Advising Weeks will be April 26-May 14. Currently enrolled students must seek out academic advising assistance during this time. Do not wait until July.

Faculty advisors are not available in July, and counselors will be working with new freshmen. Enrollment in many courses requires special permission prior to registration.

Typewriters

Typewriters are available at the EOP & S office in the supportive service center, SS-103. Use of the typewriters are free and they may be used from 8 a.m.-5 p.m. daily on a first-come basis. If you need to do some typing, check with the secretary. EOP & S does not supply supplies or materials to students for typing.

Lilith Presents Pizza

by Chris Comstock  
Rampage Reporter

Lilith, a women's theatre, presented the two-act play **Pizza** by Michele Linfante at the Bullard High School Theatre on March 30. The performance was sponsored by the Fresno City College Community Services Office.

**Pizza** is the story of Grace Innoconti, played by Marga Gomez, and her mother Lena, portrayed by Joan Mankin. It is an autobiographical fantasy in which the delivery of a pizza takes Grace back to her

childhood spent at Lena's Pizzeria in Paterson, New Jersey.

**Pizza** explores the ever-changing relationship between a mother and daughter, from Grace's teenage years in the late 50's to her early twenties when she leaves New Jersey. This is a difficult time in her relationship with her mother who is by then suffering from Parkinson's disease.

Linfante, who also directs Lilith, has created in **Pizza** a warm and humorous look at the real pain and difficulties involved in every mother-

daughter relationship. For this play, she received a playwright's fellowship from the National Endowment for the Arts.

Lilith was began in 1974, and has presented eight full-length plays, six of which were created by members of the group. They are funded by the National Endowment for the Arts and the California Arts Council. They have toured the western U.S. and Europe.

The purpose of the group is to foster a greater understanding of women while also providing unique entertainment.

Investments No Alternative

by Dale Cahill  
Rampage Reporter

It has been suggested by members of the Student Task Force for Equal Opportunity Education that the proposed instructional material fees could be avoided if the State Center Community College District were to invest its cash reserves. These reserves amount to approximately 2.1 million dollars.

Richard Cleland, Fresno City College business manager said the money is presently deposited in interest bearing accounts governed by the county treasurer.

Cleland said, "The District cannot invest in anything that is risk." He pointed out that investments such as utilities are not guaranteed to make money, and could in fact lose money for the district.

Under title 5 of the administrative code, investments which have been mentioned

would be illegal. This code in effect prevents speculation and the conflict of interest which could arise.

Cleland explained the importance of reserves to the smooth operation of a community college.

Using West Hills College as an example, Cleland said, "They are in big financial trouble." West Hills is presently operating on money that would have normally gone to other schools, including FCC.

In order to keep West Hills operating, other colleges have agreed to take less state appropriations. The State has promised to make the money up at a future date. Cleland said, "Fortunately we guarded our reserves."

In the event reserves are depleted, Cleland said "schools would have to borrow money at high interest rates." FCC however, could save thousands of dollars merely because it has ample reserves in case they are

needed.

Cleland said, "I don't think investments are a viable option because of fairly rigid controls that we have to operate under."

Cleland said, "The state legislators and the department of finance would like to see the colleges forced into spending their reserves before they appropriate any more money." With reserves of between \$200-400 million state wide the state sees this as an option to their own deposits, and a way to save money, said Cleland.

Cleland was optimistic that FCC will continue to meet its financial obligations even with a decreasing amount of money available. He said, "There was a time when we were not concerned about being able to operate. We had adequate financing." He said in some years there was an excess of \$800,000. He said "This year I would venture to say we will come to within one percent of our budget. That is not a very safe margin."

**THE HEAD SHOP**

Now Carrying a Wide Variety Of Brass And Ceramic Collectables

**25 % Off With This Ad**

VITAMINS

ALSO...UNIQUE GIFTS

Smoking Accessories . Candles.  
Handmade Articles, Incense  
(Not intended for illegal use)

Located at: 566 E. Olive  
Phone: 441-7265  
NEW HOURS: 11-7  
Seven days a week

FRESNO CITY  
COLLEGE CAFETERIA  
MENU



FRESNO CITY COLLEGE  
WEEK OF APRIL 19, 1982  
ALL MEALS \$2.10

MONDAY	TUESDAY	WEDNESDAY	THURSDAY	FRIDAY
SMITH STEAKS AUBURN POTATOES VEGETABLE DE JOUR ROLL & BUTTER TOSSED SALAD	POLISH SAUSAGE SAURKRAUT POTATO PANCAKES VEGETABLE DE JOUR TOSSED SALAD ROLL & BUTTER	BREADED VEAL CUTLET BAYED POTATOES VEGETABLE DE JOUR TOSSED SALAD ROLL & BUTTER	SOUTHERN FRIED BEEF STEAK HOME FRIED POTATOES VEGETABLE DE JOUR TOSSED SALAD ROLL & BUTTER	FILET OF COD TARTAR SAUCE FRENCH FRIES ROLL & BUTTER CREAMY COLESLAW
BURRITOS SPANISH RICE REFRIED BEANS TOSSED SALAD TORTILLAS	CHILE VEGIE REFRIED BEANS SPANISH RICE REFRIED BEANS TOSSED SALAD TORTILLAS	TOCITOS AVACADO SAUCE SPANISH RICE REFRIED BEANS TOSSED SALAD TORTILLAS	CHILE RELLENOS SPANISH RICE REFRIED BEANS TOSSED SALAD TORTILLAS	TOSTITOS SPANISH RICE REFRIED BEANS TOSSED SALAD TORTILLAS
CHICKEN ITALIAN MEAT SAUCE VEGETABLE DE JOUR TOSSED SALAD ROLL & BUTTER	ITALIAN MEATLOAF MACARONI TOSSED SALAD VEGETABLE DE JOUR ROLL & BUTTER	PEPPERONI & MUSHROOM PIZZA VEGETABLE DE JOUR TOSSED SALAD ROLL & BUTTER	ITALIAN SAUSAGE WITH ONION & PEPPERS POTATOES AUBURN VEGETABLE DE JOUR TOSSED SALAD ROLL & BUTTER	LASAGNE VEGETABLE DE JOUR TOSSED SALAD ROLL & BUTTER
BEEF BROCHETTE OVER RICE VEGETABLE DE JOUR TOSSED SALAD ROLL & BUTTER	BEEF & STEAK FRIED VEGETABLES OVER RICE VEGETABLE DE JOUR TOSSED SALAD ROLL & BUTTER	CHICKEN TERYIAKI RICE VEGETABLE DE JOUR TOSSED SALAD ROLL & BUTTER	SWEET-N-SOUR BEEF RIBS SERVED WITH RICE VEGETABLE DE JOUR TOSSED SALAD ROLL & BUTTER	STEAK FRIED SHRIMP & BEAN SPROUTS SERVED OVER RICE VEGETABLE DE JOUR TOSSED SALAD ROLL & BUTTER

OUR DAILY SPECIALS

-HOT BEAN BAR- A VARIETY OF HOT SANDWICHES SERVED WITH YOUR CHOICE OF POTATO OR MACARONI SALAD AND COLESLAW	-THE HELP YOURSELF- VEGETARIAN SALAD BAR WITH A LARGE SELECTION OF FRESH VEGETABLES, MIXED SALADS AND FRUITS	-EXPRESS LINE SPECIAL- SOUP BAR A SERVE YOURSELF CHOICE OF FOUR DIFFERENT SOUPS	-ALA CARTE- VEGETABLES PER PORTION \$1.35 \$9.99 SALADS ROLL (MEAT OR WHITE) PAT OF BUTTER .05
---	--	---	---

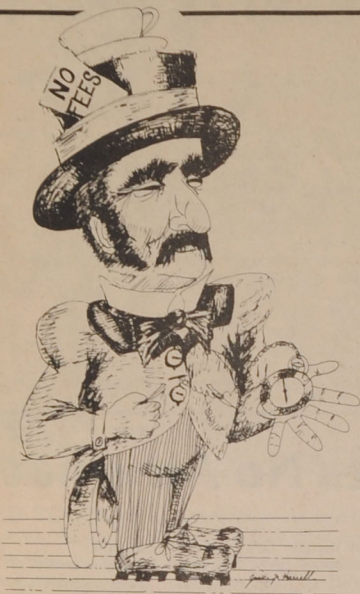
Now featuring  
a jacuzzi



FRESNO  
1551 'E' Street (209) 237-8505

Open 24 Hours  
a day every day





## Mad As A Hatter

by Sam Williams

Truth is the first obligation of the press. When covering an issue like the instructional materials fee it is necessary to report the comments of both those in favor of the fee and those opposed to the fee.

The question of truth gains even more importance when public opinion is being influenced by these reports.

Grant Marcus, associated student body president, founder and leader of the Student Task Force for Equal Opportunity Education, has made the leap through the looking glass.

From his comments on materials fees it is apparent he has no idea of what is so.

To quote Lewis Carroll, "it gets curiousest and curiousest." At any moment I expect to meet the Mad Hatter.

An examination of his comments in a recent Rampage interview will make this clear.

If there is to be any effective opposition to the fees, students are going to need a student-leader who can determine what is so and what is not so.

For example, Marcus says the best way to protect student rights is to retain a lawyer. However, a lawyer may do little to stop the imposition of materials fees. Someone should tell Marcus that 35 of 70 community colleges in California are currently charging materials fees.

Marcus said there should be an advisory committee to look into revenue. This committee should be made up of students, faculty, administrators, and community.

Here Marcus is confused on two points.

First, the board of trustees is elected by the community to make these decisions and will not betray that public trust by allowing some committee to make their decisions for them.

Second, district trustees are members of the community. Faculty, students, and administrators are included in the extended augmented chancellor's cabinet — where the current fee proposal originated. The Chancellor's cabinet has also considered community reports on the fee issue.

So, Marcus has what he wants. It's just that he wants a committee that will express his opinion.

Marcus said the college should not have cash reserves, and if the college wants to prove it needs money it should spend its reserves.

My research has found no restriction on community college reserves.

West Hills College, for example, is currently in serious trouble for not having large enough reserves. (See related article on investments, page 2.)

Is this what Marcus wants here at Fresno City College? Marcus said he would evaluate priorities but failed to mention which priorities need evaluation.

Marcus said concerts at Ratcliffe Stadium could raise money as an alternative to the fees.

It is clear Marcus knows nothing of the considerable expense and risk involved in the music business. In reality, such concerts would raise little money.

Marcus said the district has 13 employees who have come up with the materials fee.

The chancellor's office said no new employees have been hired since the fee has been under consideration. Apparently Marcus is referring to the deans, campus presidents and members of the administration who are already working and making decisions daily about the operation of the college.

Marcus would hire someone and establish the FCC foundation and "hustle" money from the community.

The word "hustle" speaks for itself.

It is clear Marcus has no understanding of the operation of college foundations. Foundations are long-range operations. An FCC foundation would not generate enough money to stall the materials fee by fall 1982. The foundation-type project for the improvement of Ratcliffe Stadium, for example, was started several years ago. And even now money will not be collected until August, 1982. The district did not hire a low-paid advisor. They hired several firms of consultants.

Foundations can generate money for things. Foundations can fund improvements and equipment. There is not one foundation anywhere which funds student fees.

Regarding Marcus' comments on the Sosa letter, it is important to note the letter never mentions fees. Not once — not even a mention.

Marcus said the letter was threatening. Marcus passed the letter out. It is just that simple.

How comments on conduct can be considered threats or pressure is somewhat confusing. The letter says the conduct at the meeting was rude. This has nothing to do with someone's opinion of fees.

Marcus said there is a conflict between himself and the editor of the Rampage. I disagree with Marcus' misleading of people. I disagree with the irresponsibility of his conduct. Perhaps this can be called conflict.

The truth is, if I could exorcise Marcus from the Rampage as an unreliable source of information, I would.

However, he is the ASB president. He is the founder and leader of the STF/EOE. The issue of fees is important to all students at FCC.

The Rampage has a duty to inform our readers of the issues and news affecting students.

We will continue to do so.

## Letters To The Editor

### Sosa Letter Reply

There was an article in the March 26th edition of your newspaper which contained an alleged quote from Dr. Luis Sosa, a FCC instructor, which said, "...I am the only faculty member concerned with students...if I were typical I would have stayed away like the rest." If Dr. Sosa did indeed say this, it is a fatuous comment which obscures the real issue at stake here. I too am against the present proposal for the imposition of student fees, unless there is no other alternative, as I have so stated in the faculty senate. I have received no threats from Dr. Ellish for this stand.

I think a logical case can and should be made which shows that such fees would be detrimental to the best interest of the people of the SCCC board who elected this board.

One of the concepts of economics which I think applies to this issue is that of spillover benefits. A spillover benefit may occur whenever the production of certain goods confers a benefit which is far in excess of its cost. I think that education of students here at FCC confers such a benefit on the community. Education not only confers benefits directly on the students who receive it in terms of better incomes and other less tangible benefits, but the education of students

here at FCC also confers sizeable benefits upon society. The local economy benefits from having a more versatile and more productive labor force.

There is also an inverse relationship between the level of education in the community and the amount of money which must be spent on crime prevention, law enforcement and welfare programs. An investment in education has one of the highest payoffs of any investment a society can make.

If student fees were to result in some people not being able to get an education here at FCC, not only would that person suffer a loss, but the entire community would suffer a loss. Therefore, since the SCCC board was elected to represent the interest of the community, and since the imposition of such fees would clearly not be in the interest of the community they represent, I would suggest that any future efforts by Mr. Marcus, Dr. Sosa, and other members of the STF/EOE be directed into developing and presenting such logical arguments to the SCCC board rather than indulging in further cathartic and self defeating episodes of the type I saw at the SCCC board meeting of March 20.

G. Dennis Shine  
Instructor

### And Another

Just for the record, I would like readers of the Rampage to be aware that there are many members of this faculty who are "concerned with students." The faculty senate which is the voice of the faculty, has taken a position against the student fees and has asked the administration to form a committee to further study the impact of fees on students.

I believe that Dr. Ellish as dean of instruction of this institution had every right to comment on the behavior of a

member of this faculty; just as a faculty member has the right to speak his or her opinion even an opinion that everyone may not agree with.

I was present at the Board meeting of March 2nd and the most disturbing aspect was the lack of respect that many displayed for their fellow students. I hope that in future meetings the speakers will be shown the proper courtesy which they so rightly deserve.

Celia Maldonado  
Faculty Senate President

### And Yet Another

Dr. Sosa is sadly mistaken if he really believes, "I am the only faculty member concerned with students."

My "concern" is manifested in the classroom, my office hours and countless additional hours spent with students.

I do not embrace Dr. Sosa's opinions, causes and methods. That does not, I believe, classify me as an unconcerned teacher.

Robert Nielsen  
Music Department Instructor

### MEChA

As a union leader in the community, I want to thank you for focusing attention upon the goal of your MEChA Club, and I would like to congratulate the MEChA Club for campaigning to get eligible students to register to vote, because that is the most effective way we can do anything about the times we are facing.

We are electing the entire House of Representatives and one-third of the Senate in 1982. We had better make ourselves heard.

Last year's cuts/job losses for the sake of Reaganomics included \$541 million in college grants and \$45 million in other education programs.

The new proposed budget for fiscal year 1983 calls for additional college grant cuts of \$1.6 billion, and other education programs will be cut \$2.4 billion. Nearly 1.9 million fewer college students will receive financial aid next year. All families of students will be need tested to qualify for guaranteed student loans.

Last year's cuts have already made it very difficult for working Americans to send their children to college.

The Reagan budget also slashes or "guts" funding for vocational education and education for handicapped and underprivileged children.

Cuts equal to those in education have also occurred in housing, unemployment

insurance, trade adjustment assistance, public service employment, CETA job training, Job Corps, railroads, highways, air transportation, federal employment, federal workers' pay, Civil Service, military retirement, railroad retirement and insurance, Medicare, Aid to Needy Families with Dependent Children, food stamps.

We do need to let our legislative administration know we are interested in what they are doing to us. We need to write our Congressmen and our Senators and let them know what we want them to be doing.

Keep up the good work.

June Wiemiller  
President, Fresno Local  
American Postal Workers  
Union, AFL-CIO

### FCC Education

"Free Enterprise at Work in Fresno," a video tape that includes excerpts of advice by Jim Costa, is helpful as are many areas of education at Fresno City College. I wish to thank my instructors who are reaching and reaching to give me new words and new realism for 1982.

Striving to teach seems to be the goal of the instructional staff as I perceive it at Fresno City College.

Name withheld on request

## This Week On Campus

### THURSDAY, APRIL 15

11-12 p.m., PASU, Senate Chambers  
11-12 p.m., PE 20A Dance Production, G 103  
12-1 p.m., MEChA, Conference Room A  
12-1 p.m., Inter-Varsity, Senate Chambers  
12-10 p.m., FCC Jazz Band Concert, Theater  
1-2 p.m., NAISA, Conference Room A  
1-3:30 p.m., ASB Senate Meeting, Senate Chambers  
4-5 p.m., Phi Beta Lambda, BE 218

### FRIDAY, APRIL 16

7-8 a.m., Fellowship of Christian Athletes, Conference Room A  
2 p.m., Tennis (W) FCC v. Columbia, Tennis Courts  
2 p.m., Tennis (M) FCC v. Columbia, Tennis Courts  
7:30 p.m., Fresno Judo Club, G 107

### SATURDAY, APRIL 17

8 a.m.-6 p.m., San Joaquin Tennis Tournament, Tennis Courts  
1:00 p.m., Baseball, FCC v. Merced, Ratcliffe Stadium

### SUNDAY, APRIL 18

8 a.m.-6 p.m., San Joaquin Tennis Tournament, Tennis Courts  
1-5 p.m., Sabia Folk Music Concert, Theater

### MONDAY, APRIL 19

1-5 p.m., ASB Film Series, Senate Chambers  
5:30 p.m.-7 p.m., Union Martial Arts, G 104

### TUESDAY, APRIL 20

11-12 p.m., PE 20A Dance Production, G 103  
12-1 p.m., Inter Varsity, Senate Chambers  
1-3:30 p.m., ASB President's Cabinet, Senate Chambers  
1 p.m., Golf, FCC v. COS, Fig Garden Country Club  
2 p.m., Baseball, FCC v. Porterville, Euless  
4-5 p.m., Phi Beta Lambda, BE 218

### WEDNESDAY, APRIL 21

7-8 a.m., DECA, BE 135  
8-4 p.m., Students For Safe Energy, Free Speech Area and Fountain Area  
9-12 p.m., Students For Safe Energy, MEChA, NAISI, Earth Awareness Day, Free Speech Area and Fountain Area  
12-1 p.m., Baptist Student Union, Conference Room A  
1-5 p.m., ASB Film Series, Senate Chambers  
5:30-7 p.m., Union Martial Arts, G 107  
7-8:30 p.m., Fresno Judo Class, G 107

### THURSDAY, APRIL 22

11-12 p.m., PASU, Senate Chambers  
11-12 p.m., PE 20A Dance Production, G 103  
12-1 p.m., MEChA, Conference Room A  
12-1 p.m., Inter-Varsity, Senate Chambers  
1-3:30 p.m., ASB Senate Meeting, Senate Chambers  
4-5 p.m., Phi Beta Lambda, BE 218

## Blood Wedding

Thank you, FCC Theatre Arts staff and students for bringing us Federico Garcia Lorca's tragedy, Blood Wedding. It is a difficult play, full of complicated poetic images and symbolism; and the archaic English translation (which Lorca's family refuses to alter) at its best reduces the impact of Lorca's brilliant language and at its worst, sounds silly and trite.

In the face of these obstacles, Richard Hoffman, director, the cast, and the technical staff deserve kudos for a production with many strengths.

Lisa Reitz, as the voluptuous and passionate young bride, tempered her role with the right display of emotion at the right time. Her performance was brilliant.

As Leonardo's pitiful wife, whose suspicion and dread grew along with Leonardo's inner rage, Vicki Gonsalves was always believable, never allowing herself to lose the dignity the role requires.

Both actresses demonstrated clearly how well Lorca understood the women in his plays and the sympathy he had for them.

Clint Showalter was extremely effective as the fiery ex-fiance and lover of the bride, but in a crucial scene he was not true to Garcia Lorca's character. Leonardo, emotionally devastated by his own marriage to a woman he did not love and by his lover's marriage to a man she did not love, is violently torn by an

unceasing rage and passion. Yet, he never hates his wife—never. In fact, ridden by guilt, he demonstrates a tenderness towards her. Showalter's Leonardo, however, showed vile contempt for his wife. Showalter did redeem himself in the scenes with the bride, especially in the forest scene where he and Reitz beautifully depicted some of the sensuality Lorca's play calls for.

Tony Williams as the Moon and M.J. Watt as the beggar woman were spellbinding and flawless in their conspiracy to spill the blood of the two young virile rivals.

It is unfortunate that Tom Janeczek was not on the stage more. He was missed each time he left. As the bride's father, Janeczek conveyed the gentle humor, sensitivity, and kindness of an elderly Spanish gentleman.

The servant woman, Lisa Bishop, an actress with great energy and promise, infused her role with a bawdy, comedic interpretation which would do credit to Shakespeare, but not to Garcia Lorca. His servant woman was not the one we saw on the stage. Bishop provided a comic relief Garcia Lorca never intended.

Besides some laudable acting, Blood Wedding presented the audience with sets, lighting, costumes and make-up which match, perhaps even surpass, anything on a professional level.

Fresno City College students and staff, as well as the community, are fortunate to have a theatre arts department of such high caliber.

Kathy Clarey of the Fresno Bee may wonder why FCC took on the difficult Blood Wedding. I do not. I applaud them and encourage them in their efforts to attempt classical plays and to bring Fresno serious drama. I am tired of silly musicals and the worn out plays that "work."

Camilla Colby  
Spanish/English  
Instructor, FCC

**SHARE  
THE COST  
OF  
LIVING.**

Give to the  
American  
Cancer Society.

This space contributed as a public service